

CALEDONIAN RAILWAY

III
153

Planche 1.

SCALE to Fig 1
Inches 12 9 0 1 2 3 4 5 6 7 8 9 10 11 12 13 14 15 16 17 18 19 20 Feet

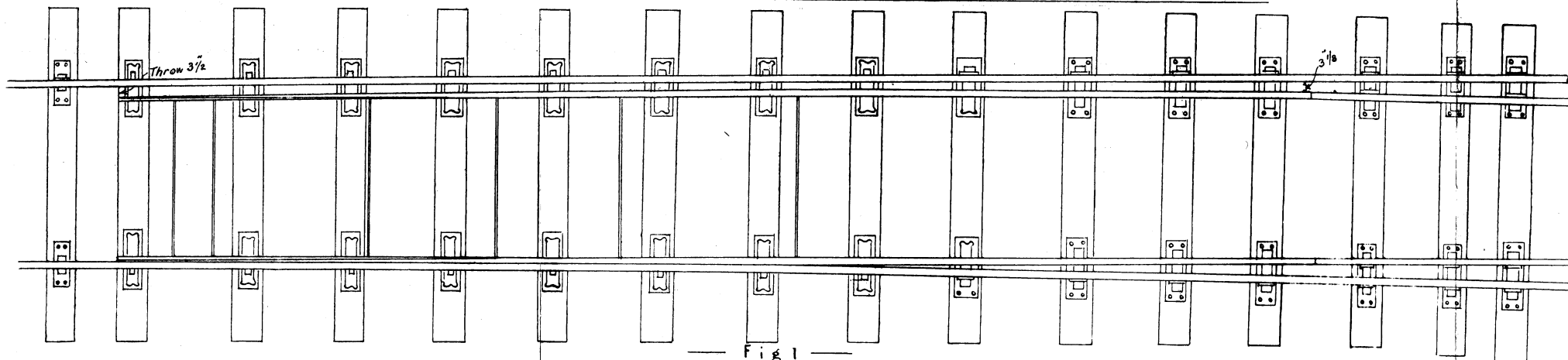
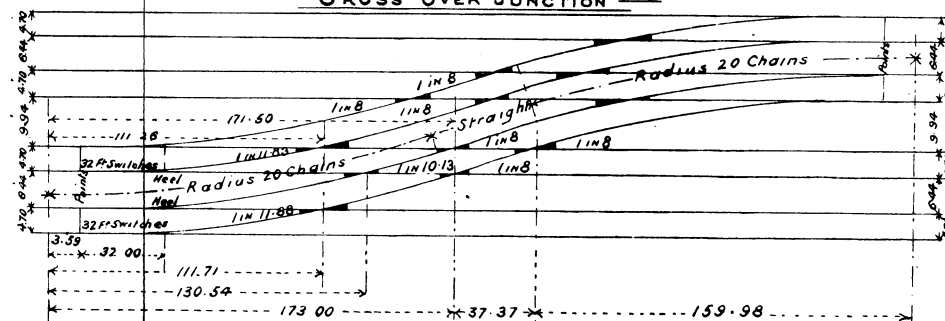


Fig 1
POINTS

Fig 6
CROSS OVER JUNCTION



Explication des termes anglais :

Scale to = Échelle de la. — Throw 3 1/2" = Course : 89 millimètres. — Points = Aiguilles. — Cross over junction = Diagonale. — 32 ft. switches = Aiguilles de 10.75 mètres. — Heel = Talon. — Straight = Partie droite. — Radius 20 chains = Rayon de 400 mètres. — 90 lb. per yard = 44.65 kilogrammes par mètre. — Stock rail = Rail contre-aiguille. — Distance piece = Cale d'espacement. — Points = Aiguille. — Travel of points = Course de l'aiguille. — Sleeper = Traverse. — Rail 1/2 size = 1/2 grandeur. — Section at toe of points 1/2 size = Section à la pointe d'aiguille 1/2 grandeur. — Section 10 ft. from toe 1/2 size = Section à 3 mètres de la pointe 1/2 grandeur.

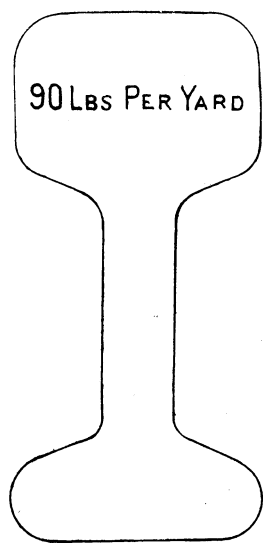


Fig 2
RAIL 1/2 SIZE

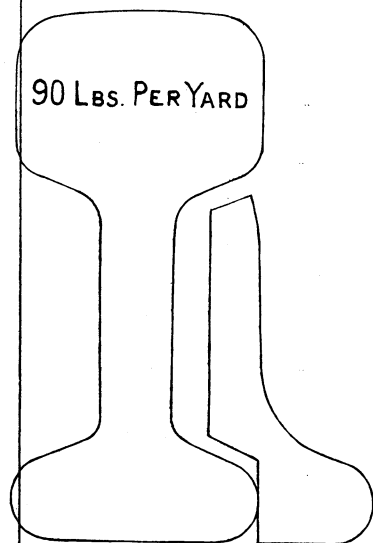


Fig 3
SECTION AT TOE OF POINTS 1/2 SIZE

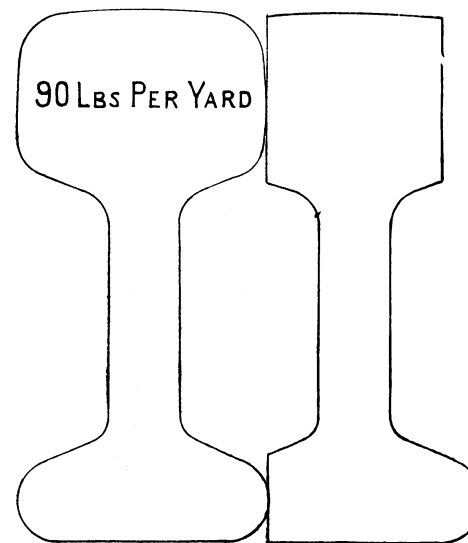


Fig 4
SECTION 10 FT. FROM TOE 1/2 SIZE

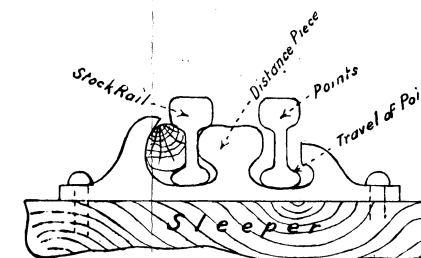


Fig 5