

Fig 1
1 IN 8 CROSSING

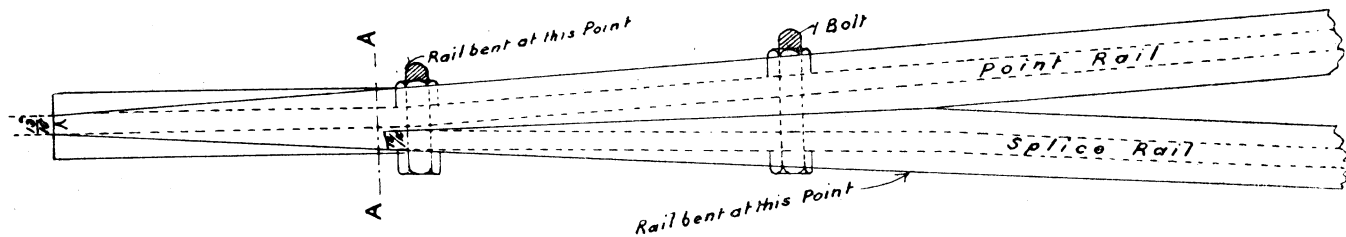


Fig 2
PLAN OF SPLICE RAIL CROSSING

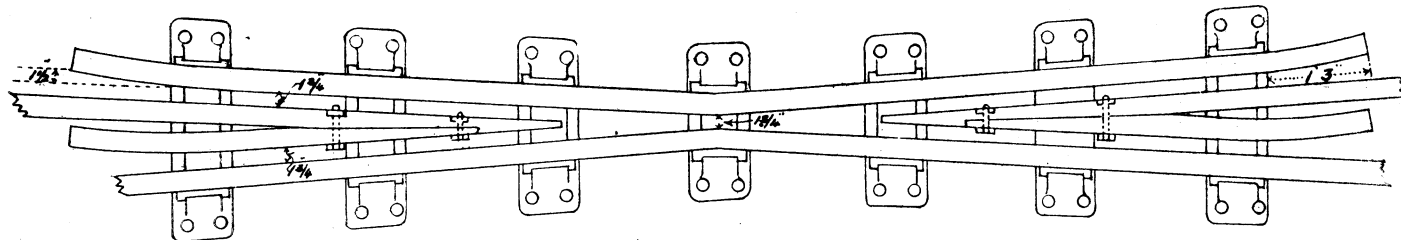


Fig 3
DIAMOND CROSSING 1 IN 8

GLASGOW & SOUTH WESTERN RAILWAY

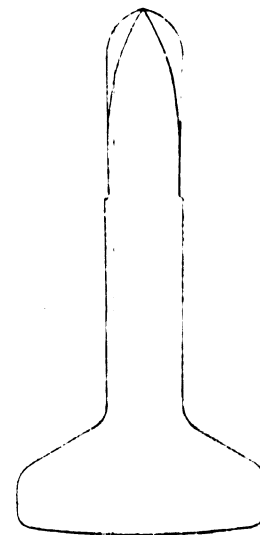
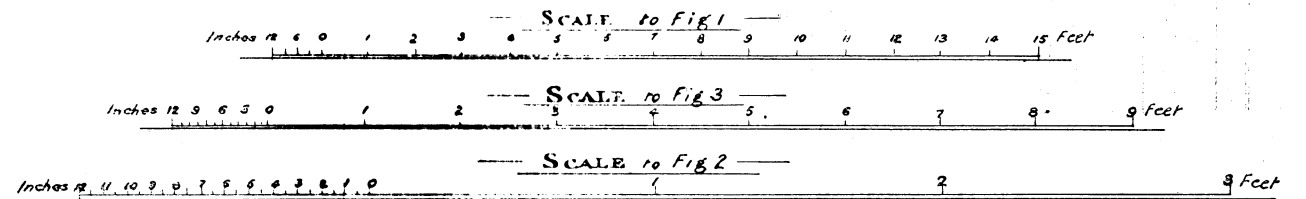


Fig 4
NOSE OF CROSSING 1/2 SIZE

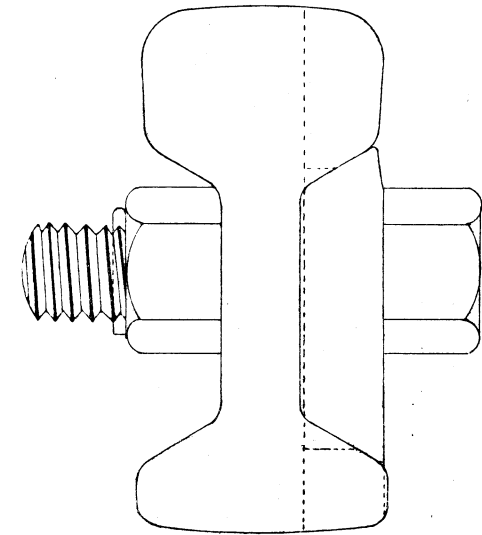


Fig 5
SECTION THRO SPLICE AA 1/2 SIZE

Explication des termes anglais :

Check Rail = Contre-rail. — Wing Rail 5.0 Long from Point = Patte de lièvre de 1.524 mètre de longueur à partir de la pointe. — 1 in 8 Crossing = Croisement de 1 : 8. — Rail bent at this Point = Rail cintré en ce Point. — Bolt = Boulon. — Point Rail = Rail de pointe. — Splice Rail = Rail de contre-pointe. — Plan of Splice Rail Crossing = Plan d'un croisement à rails assemblés. — Diamond Crossing 1 in 8 = Traversée de 1 : 8. — Nose of Crossing 1/2 Size = Pointe de cœur 1/2 grandeur. — Section thro Splice A. A. 1/2 Size = Coupe A. A. par l'assemblage 1/2 grandeur.