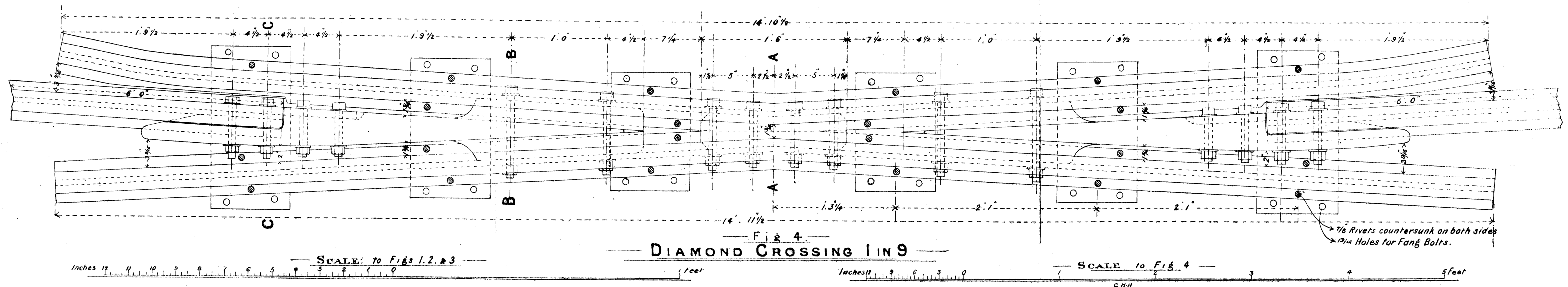
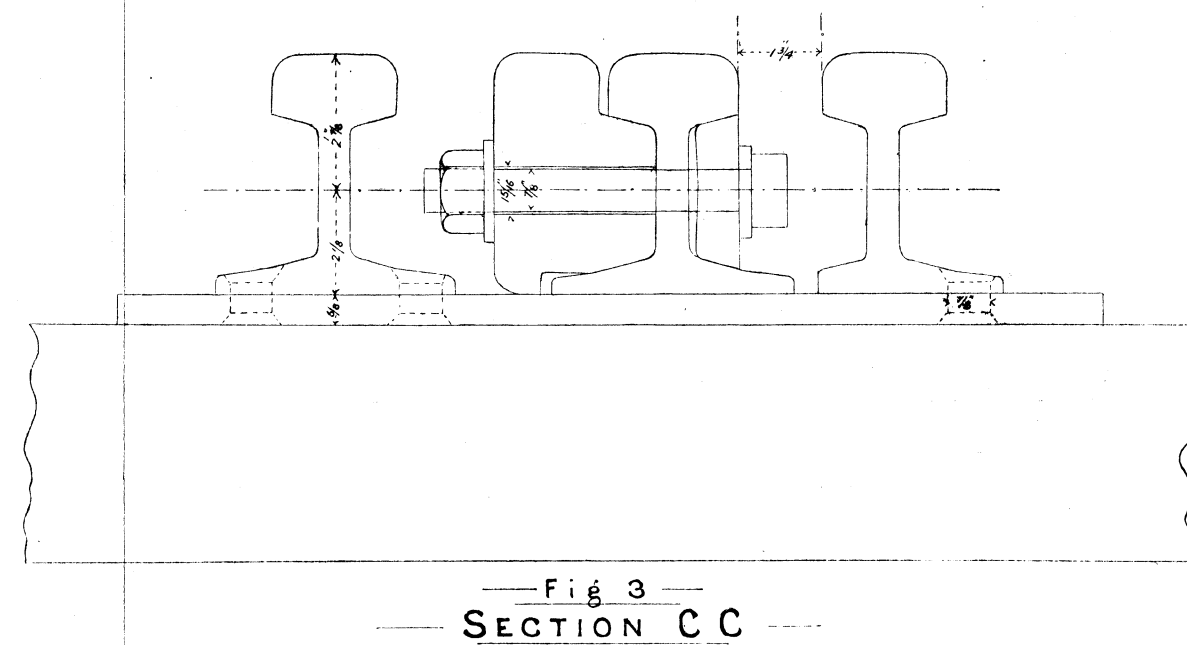
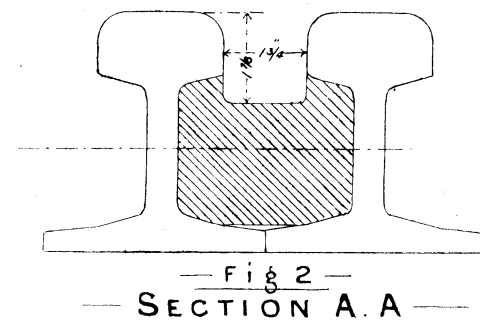
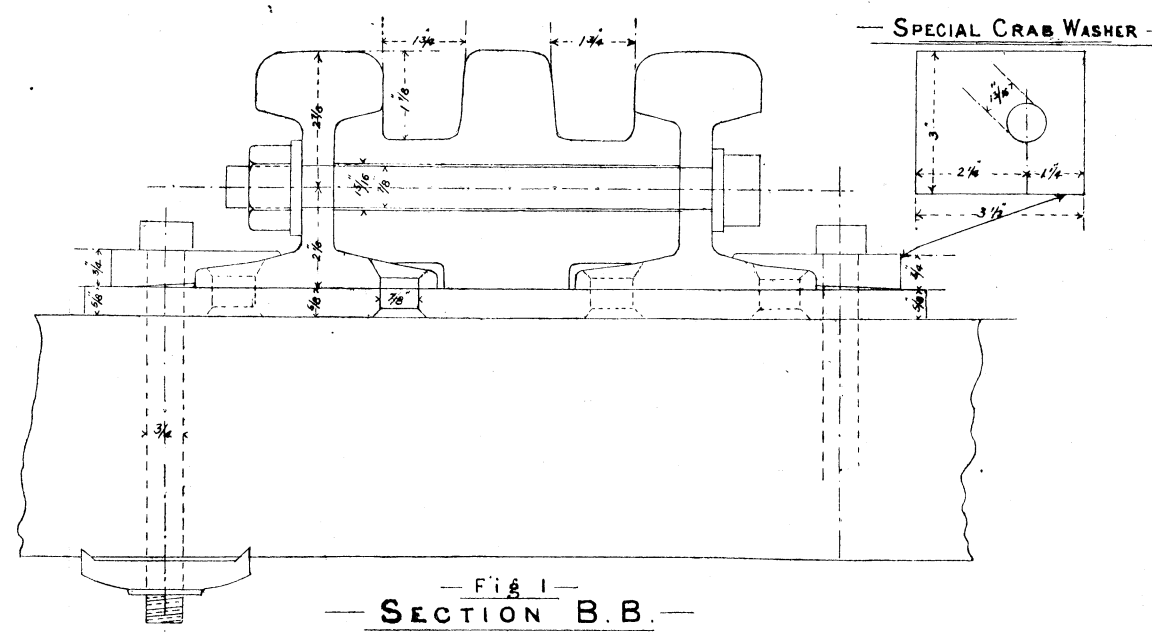
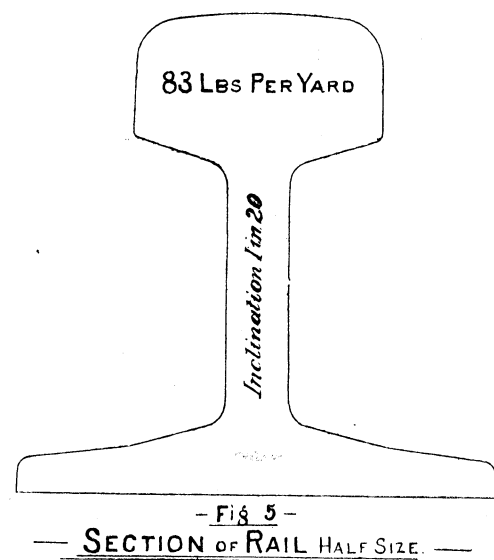


GREAT SOUTHERN AND WESTERN RAILWAY

IRELAND



Explication des termes anglais : Special Cras Washer = Rondelle spéciale. — Inclination 1 in 20 = Dévers de $\frac{1}{20}$. — Section of Rail Half Size = Section du rail demi-grandeur. — Diamond Crossing 1 in 9 = Traversée de 1 : 9. — Rivets countersunk on both sides = Rivets fraisés sur les deux côtés. Holes for Fang Bolts = Trous pour boulons à griffes.