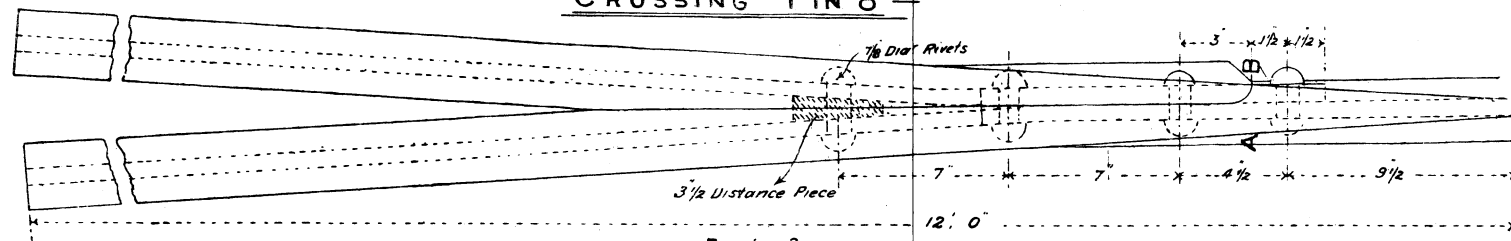


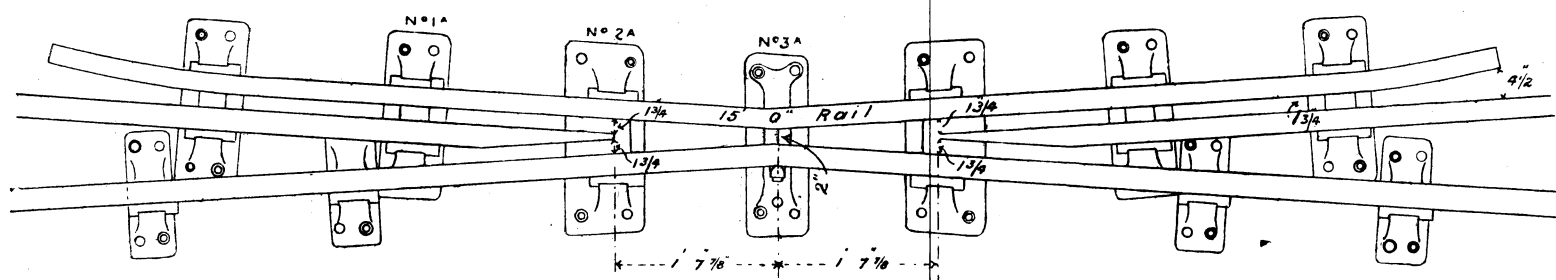
— Fig 1 —
— CROSSING 1 IN 8 —

TABLE SHEWING BASE AND WEIGHT OF 1 IN 8 CROSSING CHAIRS		
N ^o	BASE	WEIGHT IN LBS
1	22 1/2 x 7 3/4	93
2	28 x 7 3/4	119
3	23 7/8 x 9 7/8	131
4	23 x 7 3/4	101
5	20 7/8 x 7 3/4	81

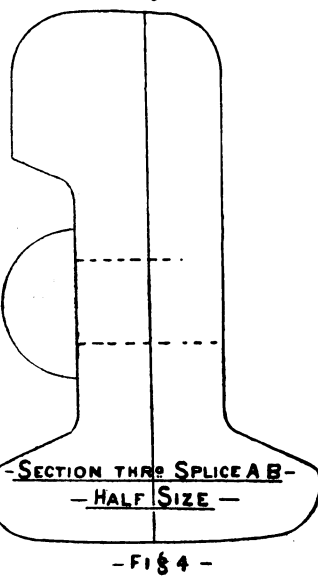
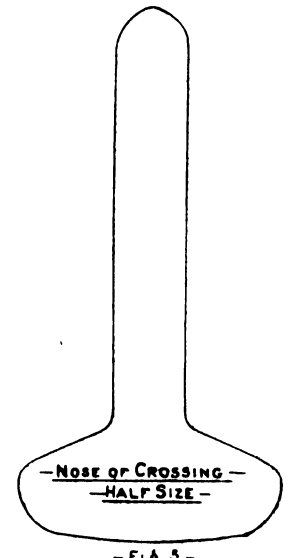
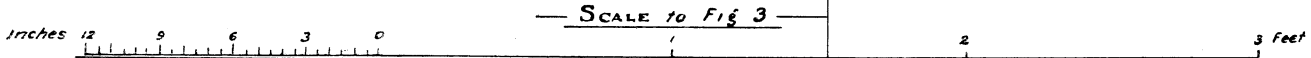
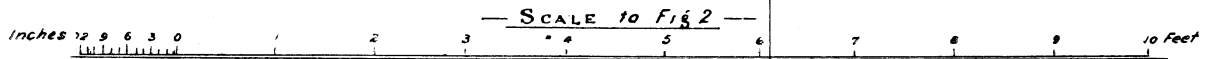
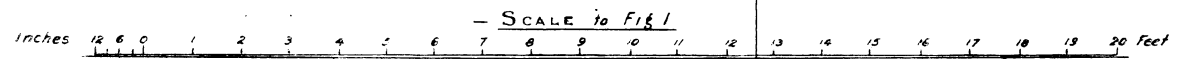
TABLE SHEWING BASE AND WEIGHT OF 1 IN 8 DIAMOND CROSSING CHAIRS		
N ^o	BASE	WEIGHT IN LBS
1 ^A	20 7/8 x 7 3/4	81
2 ^A	23 7/8 x 9 7/8	131
3 ^A	22 x 7 3/4	70



— Fig 3 —
— PLAN OF SPLICE RAIL OF CROSSING —



— Fig 2 —
— DIAMOND CROSSING 1 IN 8 —



Eexplication des termes anglais :

Check rail = Contre-rail. — Table shewing Base and weight of 1 in 8 Crossing Chairs = Dimensions de la base et poids des coussinets de croisement de 1 : 8. — Table shewing Base and weight of 1 in 8 Diamond Crossing Chairs = Dimensions de la base et poids des coussinets de traversée de 1 : 8. — Crossing 1 in 8 = Croisement de 1 : 8. — 1/8 Diameter Rivets = Rivets de 22 millimètres. — Distance Piece = Pièce d'écartement. — Plan of Splice Rail of Crossing = Plan des rails assemblés formant le croisement. — Nose of Crossing Half Size = Pointe de cœur demi-grandeur. — Diamond Crossing 1 in 8 = Traversée de 1 : 8. — Section through Splice AB Half Size = Coupe par l'assemblage demi-grandeur.