

NEW SOUTH WALES RAILWAY

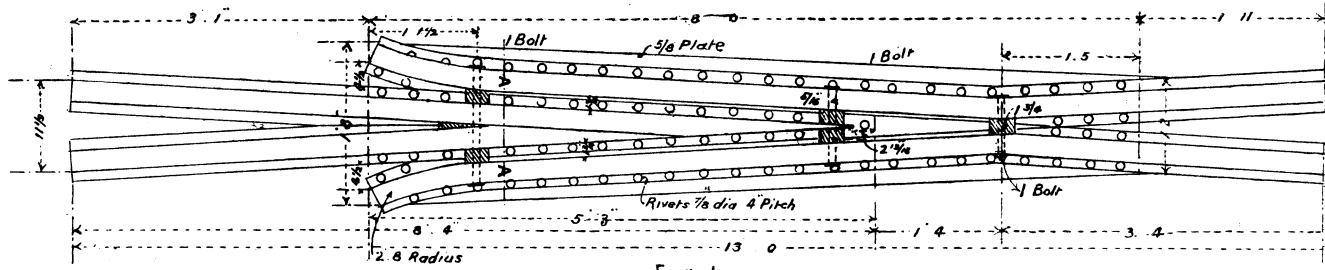


Fig 1
CROSSING 1 IN 9

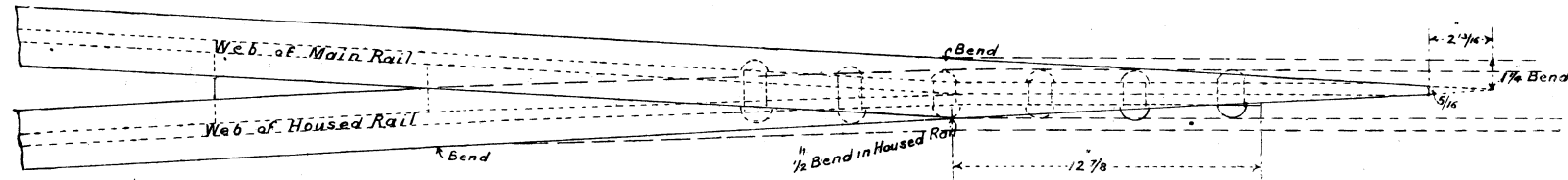


Fig 2
DETAIL OF SPLICE 1 IN 9 CROSSING

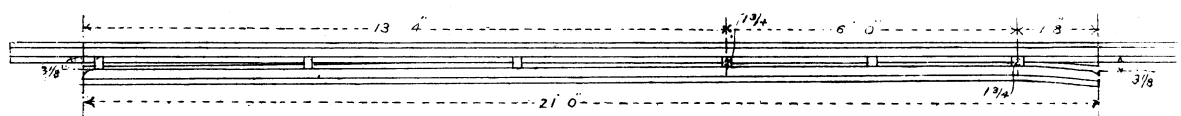


Fig 3
DETAIL OF CHECK RAIL

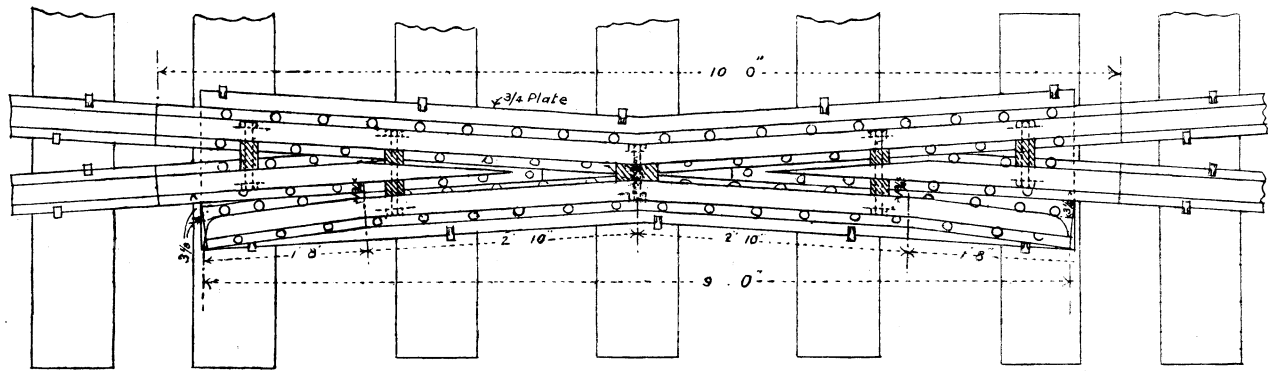


Fig 4
DIAMOND CROSSING 1 IN 8

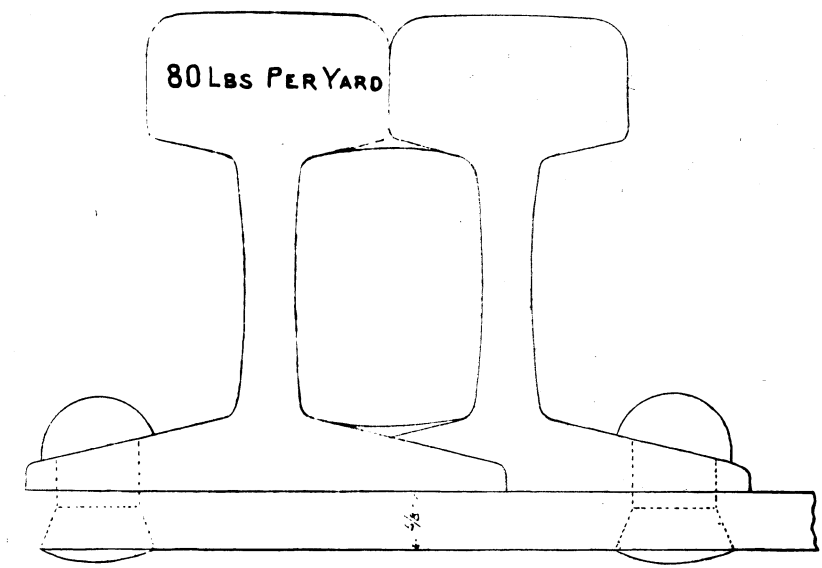
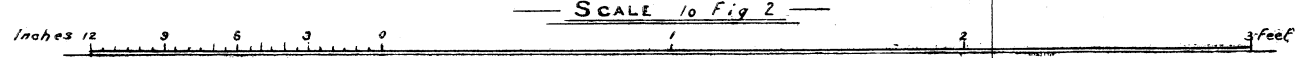
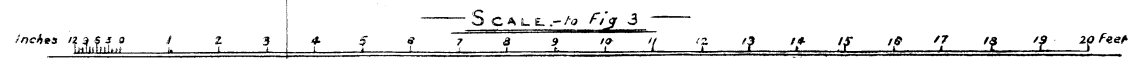


Fig 5
SECTION AA HALF SIZE



Explication des termes anglais : Plate = Espacement. — Bolt = Boulon. — Crossing 1 in 9 = Croisement de 1 : 9. — Web of Main Rail = Ame du rail de pointe. — Web of Housed Rail = Ame du rail de contre-pointe. — Bend = Inflexion. — Detail of Splice 1 in 9 Crossing = Detail de l'assemblage d'un croisement de 1 : 9. — Detail of Check Rail = Detail du contre-rail. — Diamond Crossing 1 in 8 = Traversée de 1 : 8. — Section A. A. half Size = Section A. A. demi-grandeur.