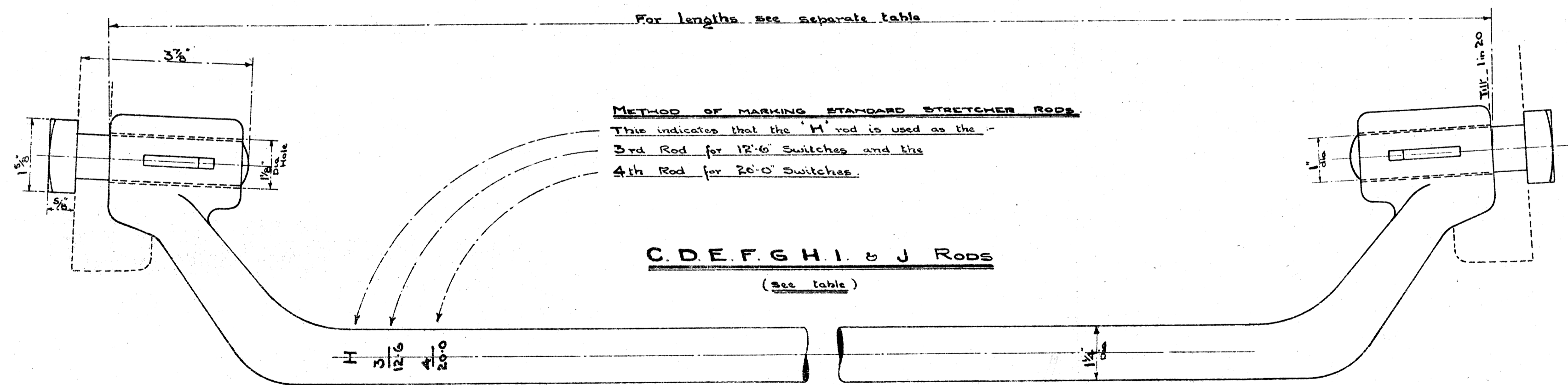
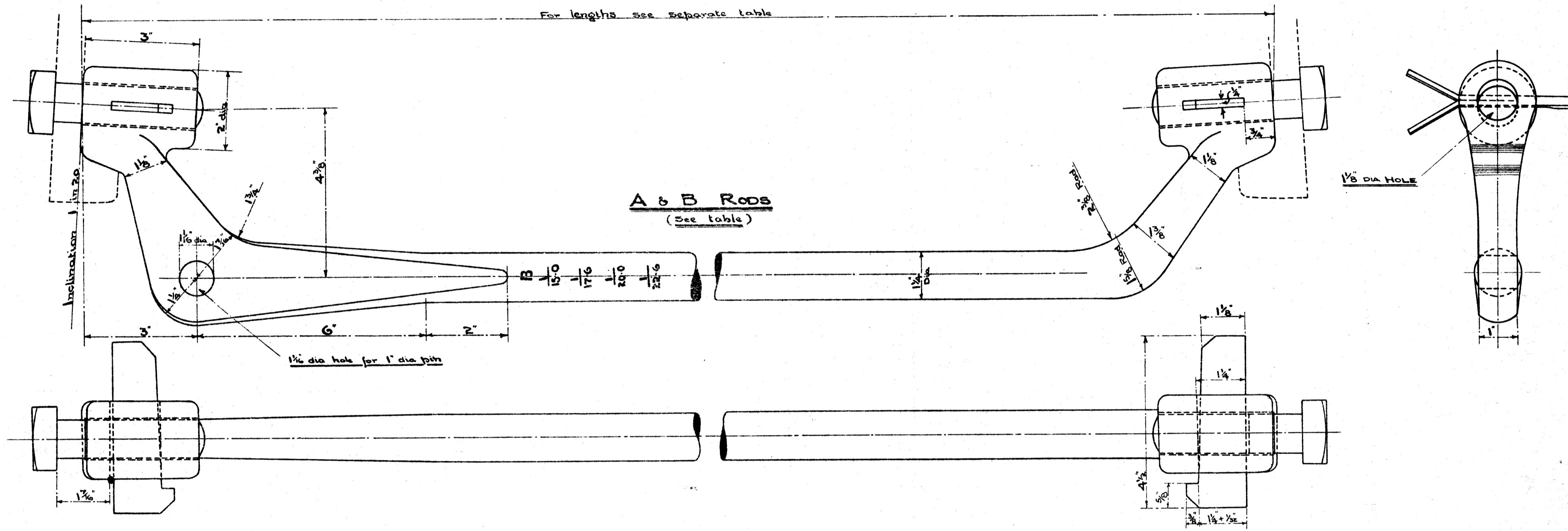


**DETAILS OF STRETCHER RODS FOR SWITCHES.**

*Scale half full size.*



**METHOD OF MARKING STANDARD STRETCHER RODS.**  
 This indicates that the 'H' rod is used as the -  
 3rd Rod for 12'6" Switches and the  
 4th Rod for 20'0" Switches.

*C. F. Pugh*

NORTH EASTERN RAILWAY  
 REFERENCE NO  
**572 327**  
 18  
 10<sup>th</sup> FEB 1912  
 ENGINEER'S OFFICE YORK