

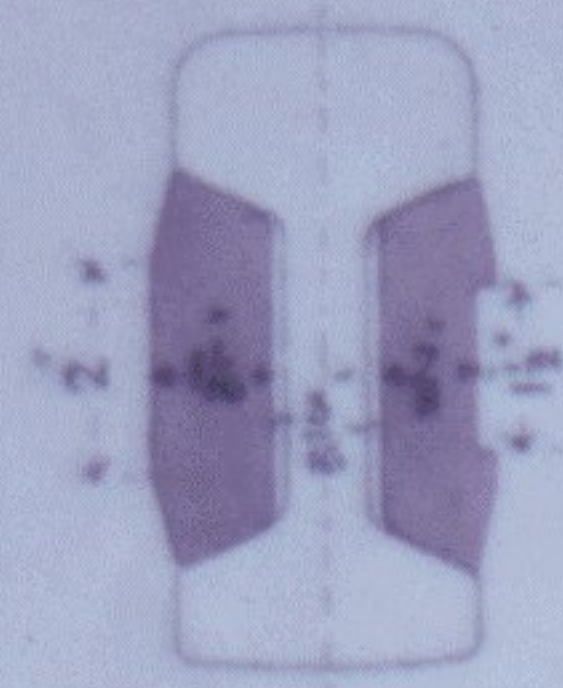
— G . E . R . —

DETAIL OF JOINT & FASTENINGS FOR 95^{LB} BULL HEADED STEEL RAILS.

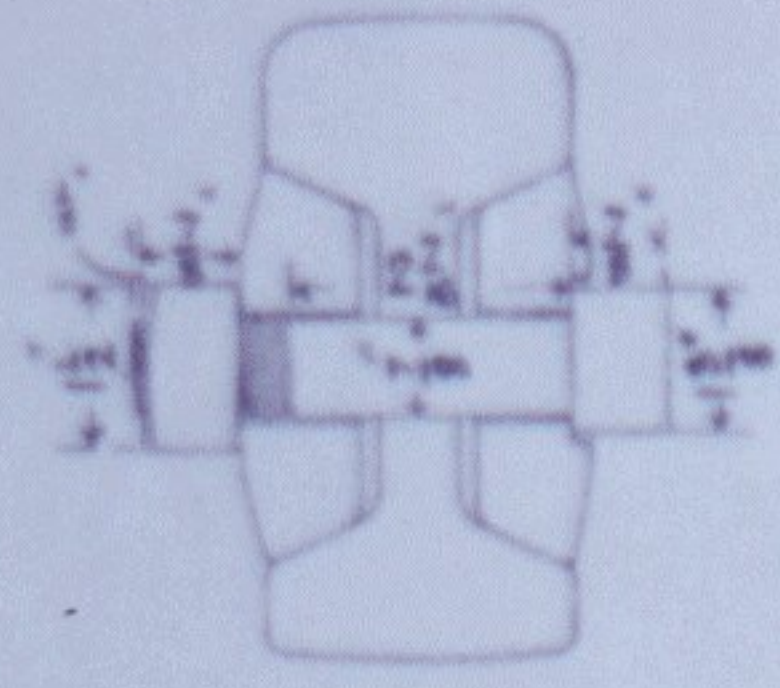
QUARTER FULL SIZE.



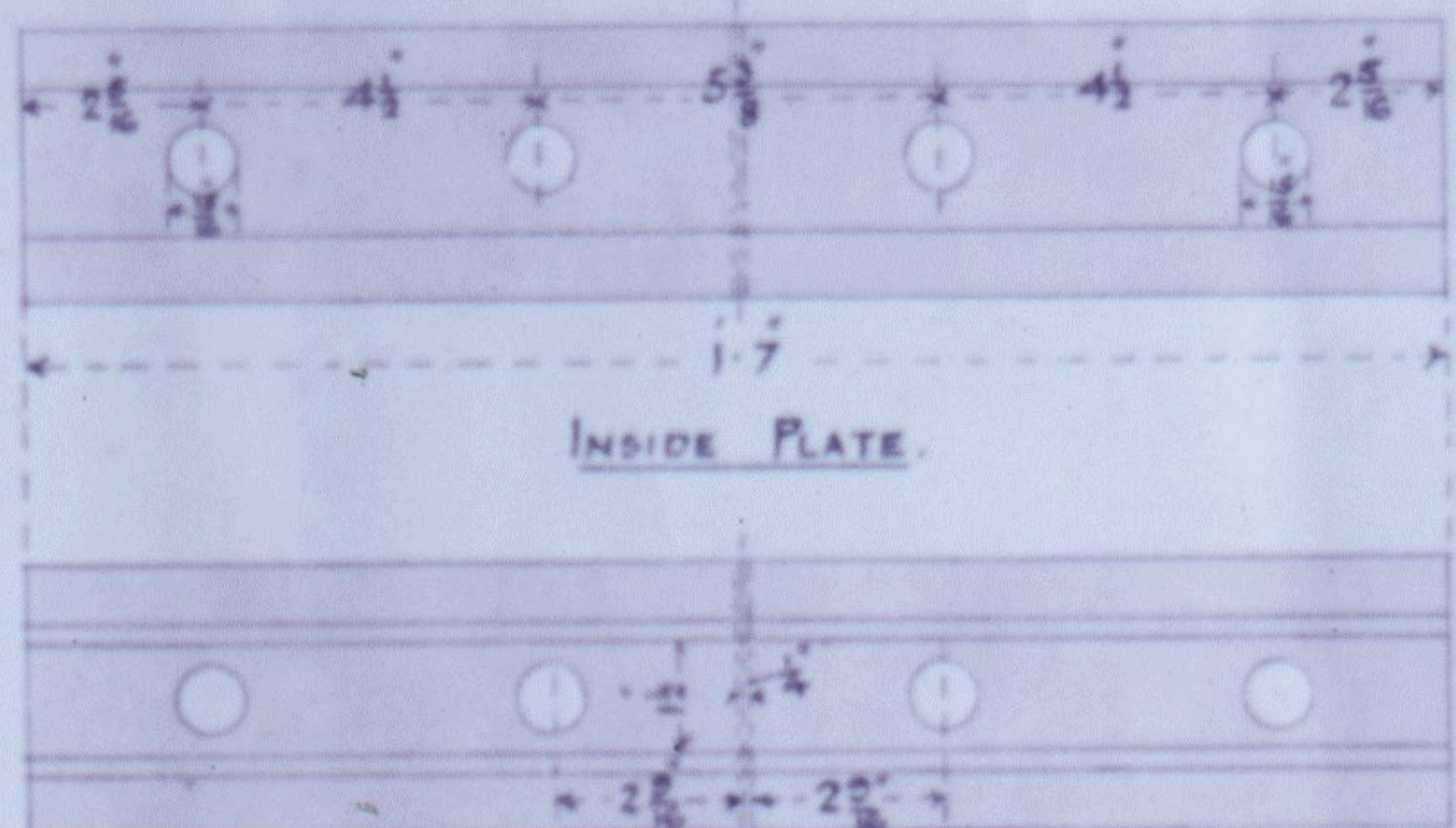
SECTION OF RAIL
95^{LB} PER YARD.



SECTION OF FISH PLATE.

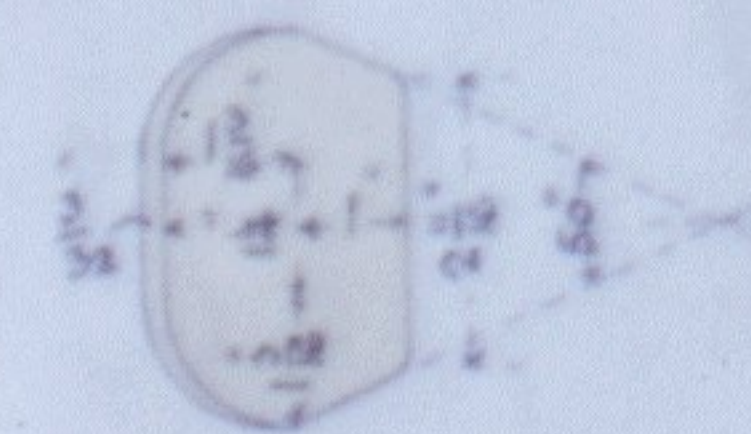


DETAIL OF FISH BOLT.
WEIGHT 1 1/2 10⁰⁰

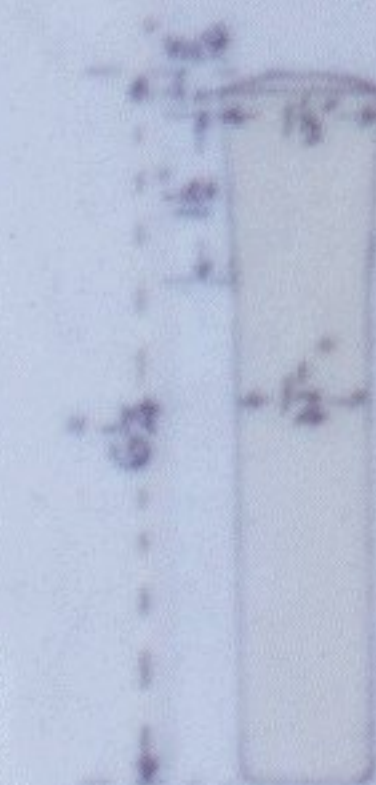


INSIDE PLATE.

OUTSIDE PLATE.
FISH PLATES.
WEIGHT 33 1/2^{LB} PER PAIR.



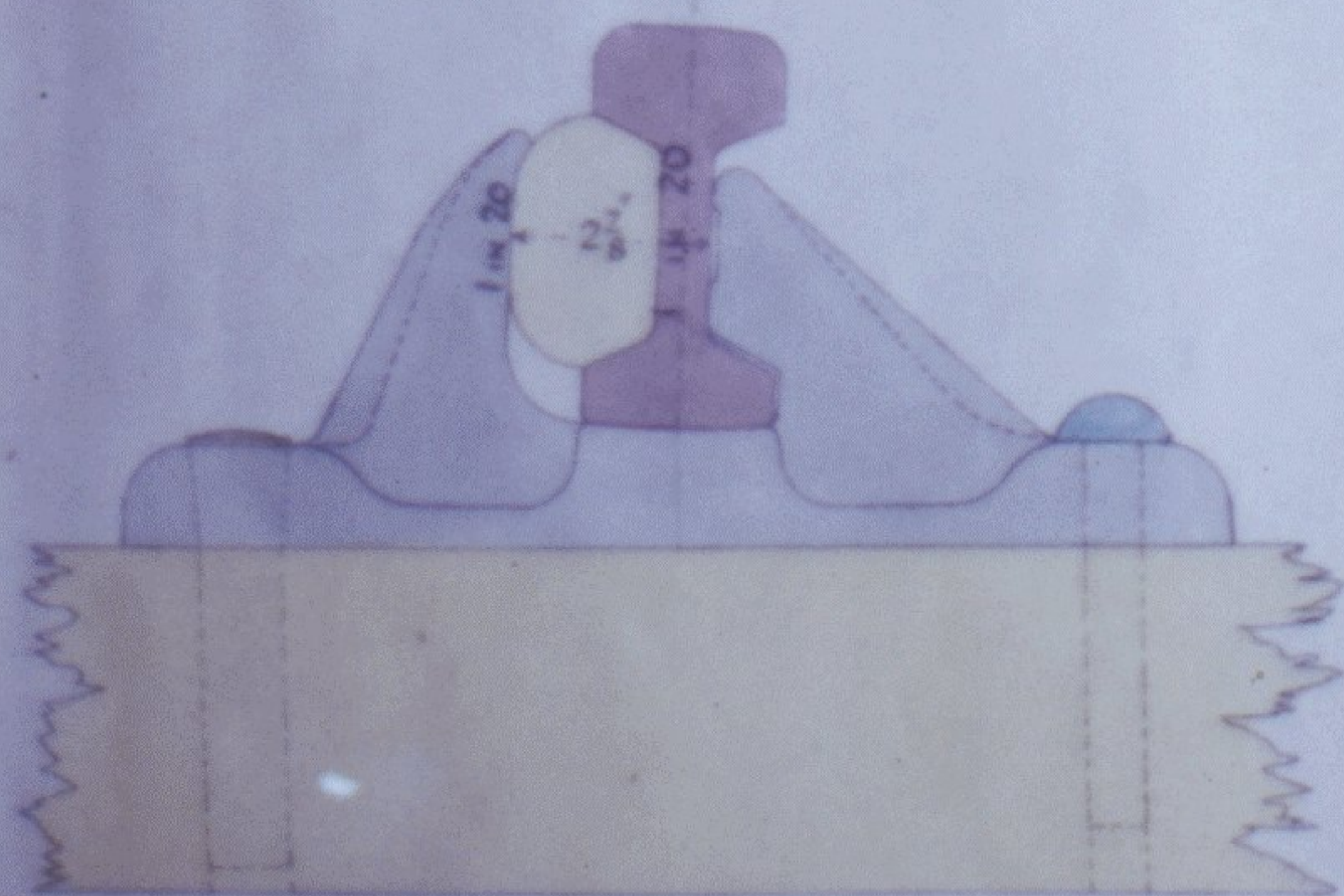
COMPRESSED TAPERED FIR OR
OAK KEY 7 INCHES LONG.



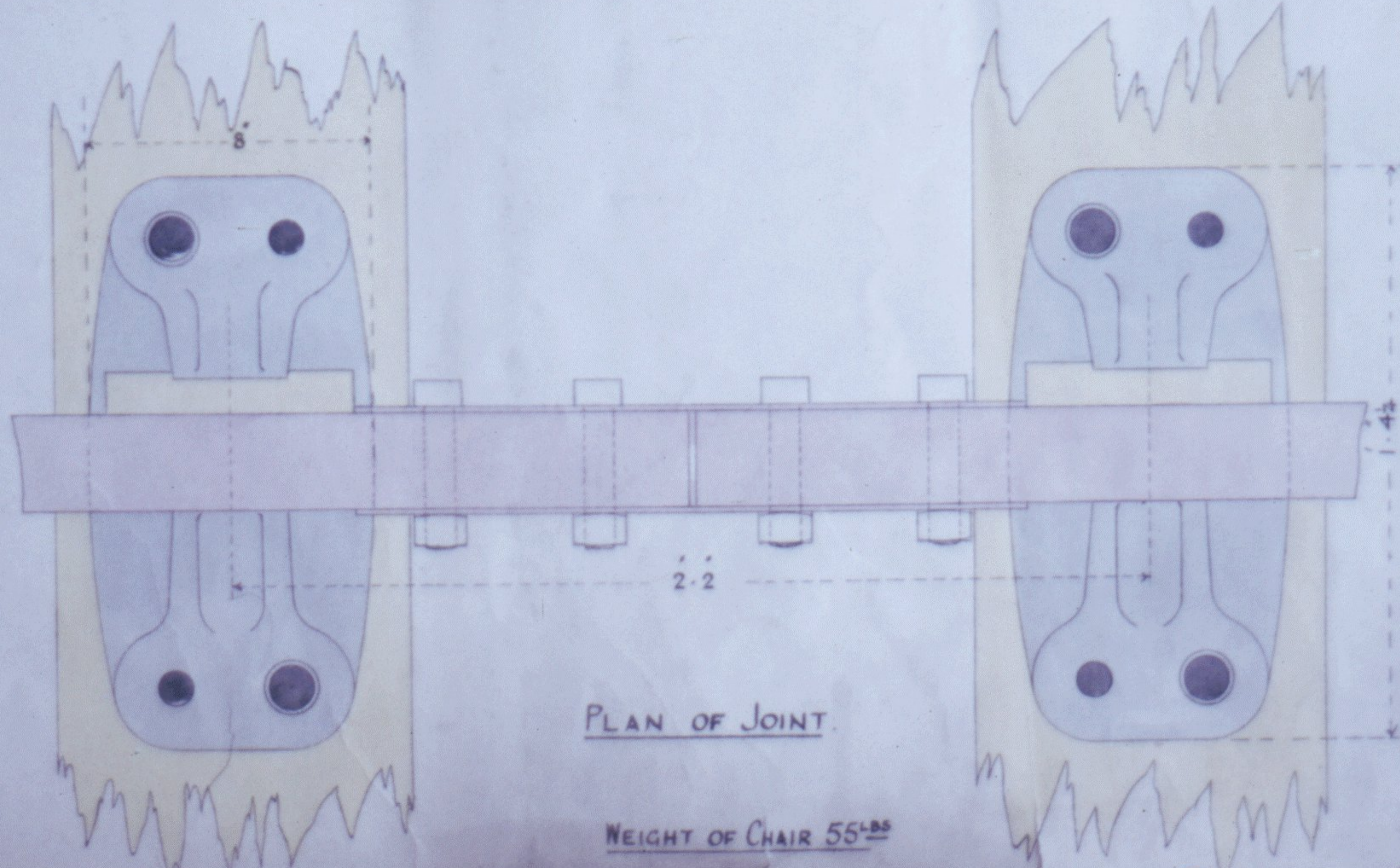
COMPRESSED OAK
TRENAILS.



W.I. SPIKE
WEIGHT 15^{LB}

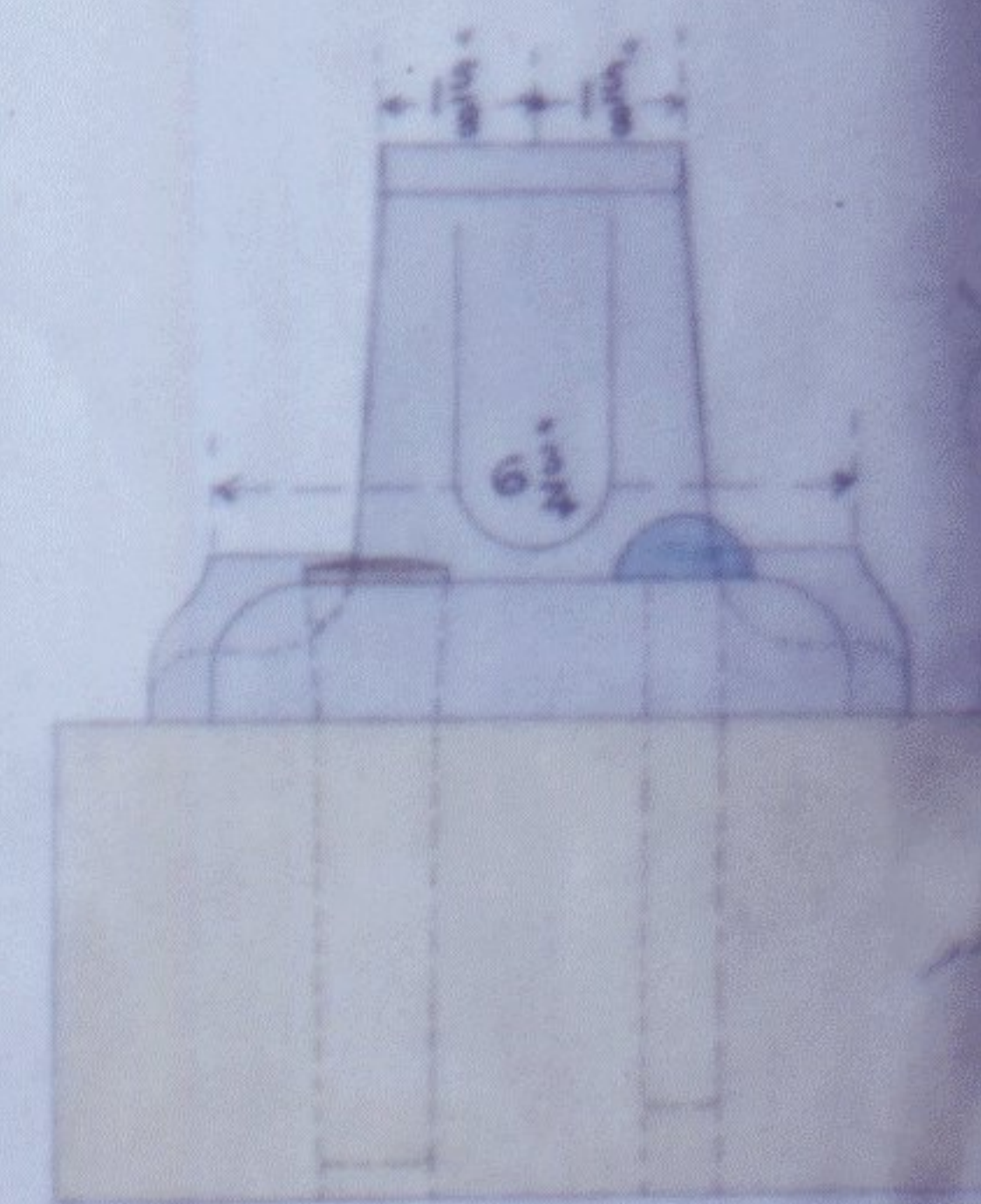


ELEVATION OF CHAIR



PLAN OF JOINT.

WEIGHT OF CHAIR 55^{LB}



END ELEVATION OF CHAIR

John Wilson
11 2