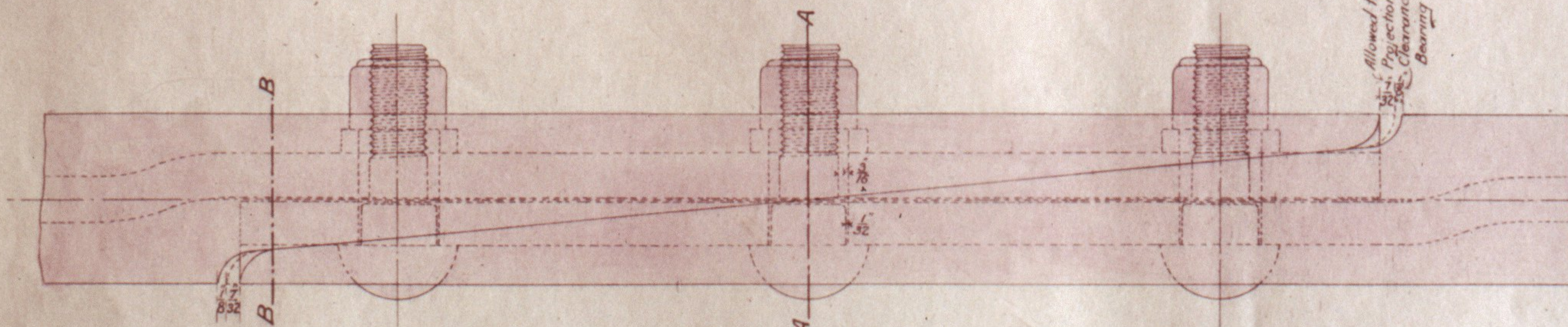


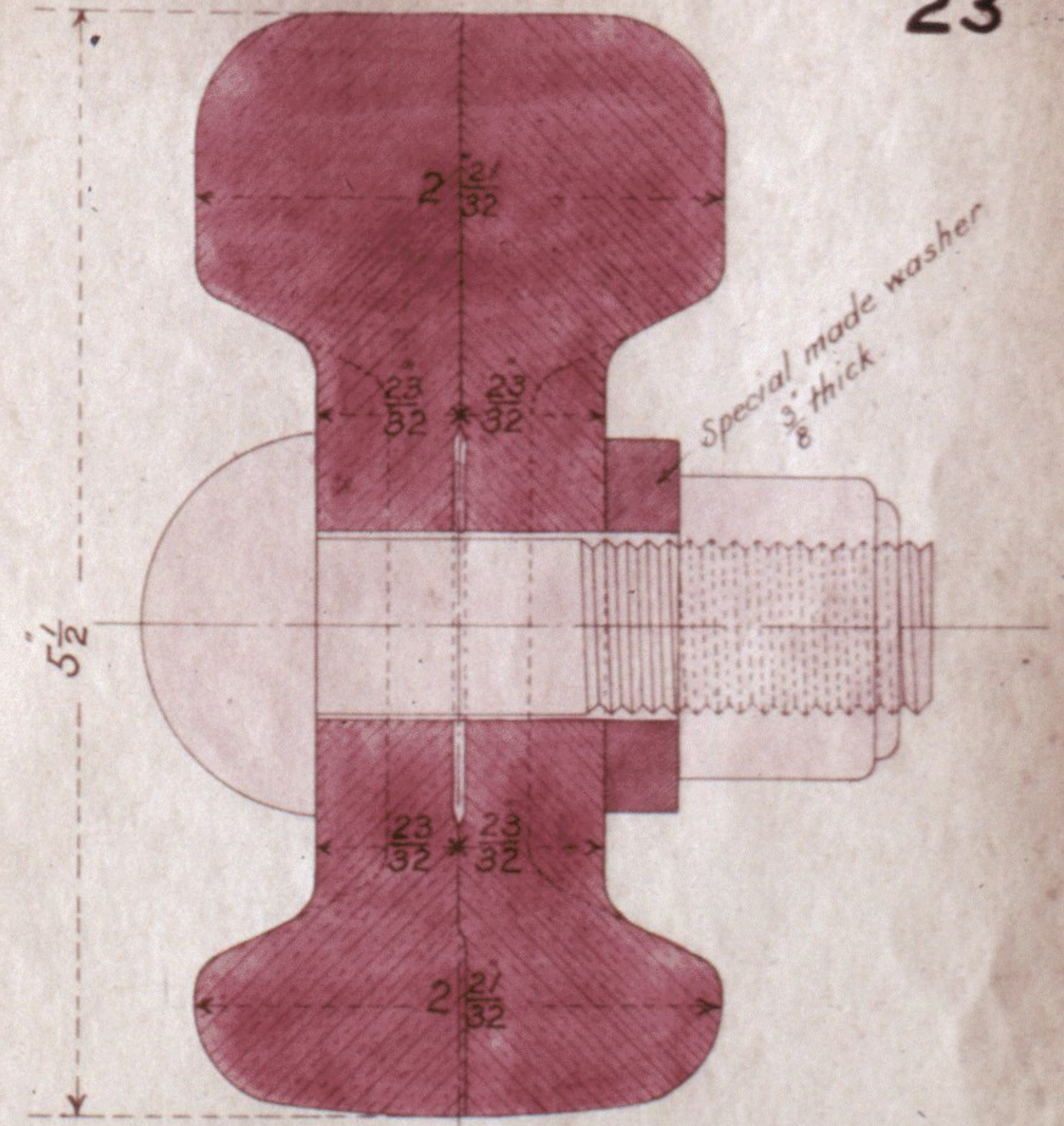
# HOLME, HART & WATSON'S PATENT RAIL JOINT.

N<sup>o</sup> 17664/99.

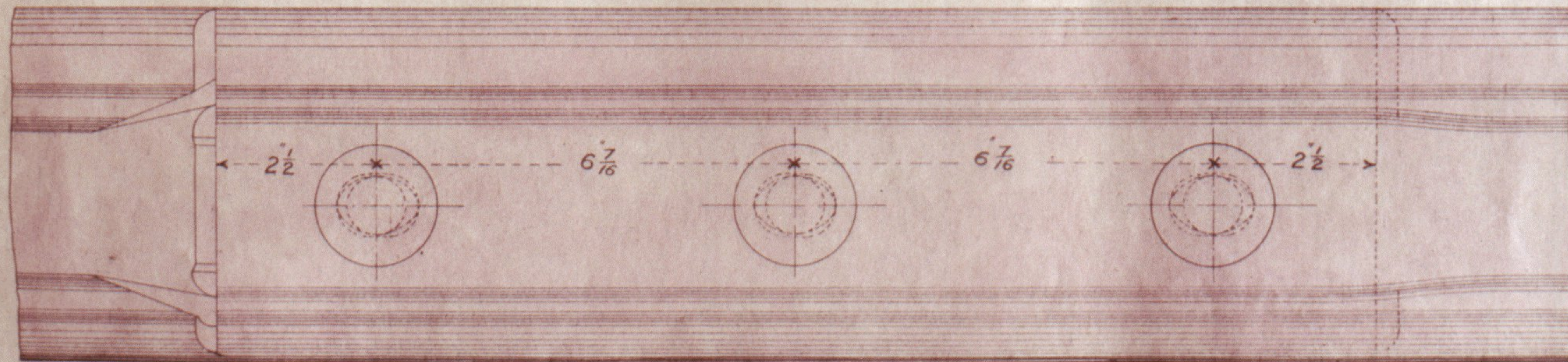


PLAN

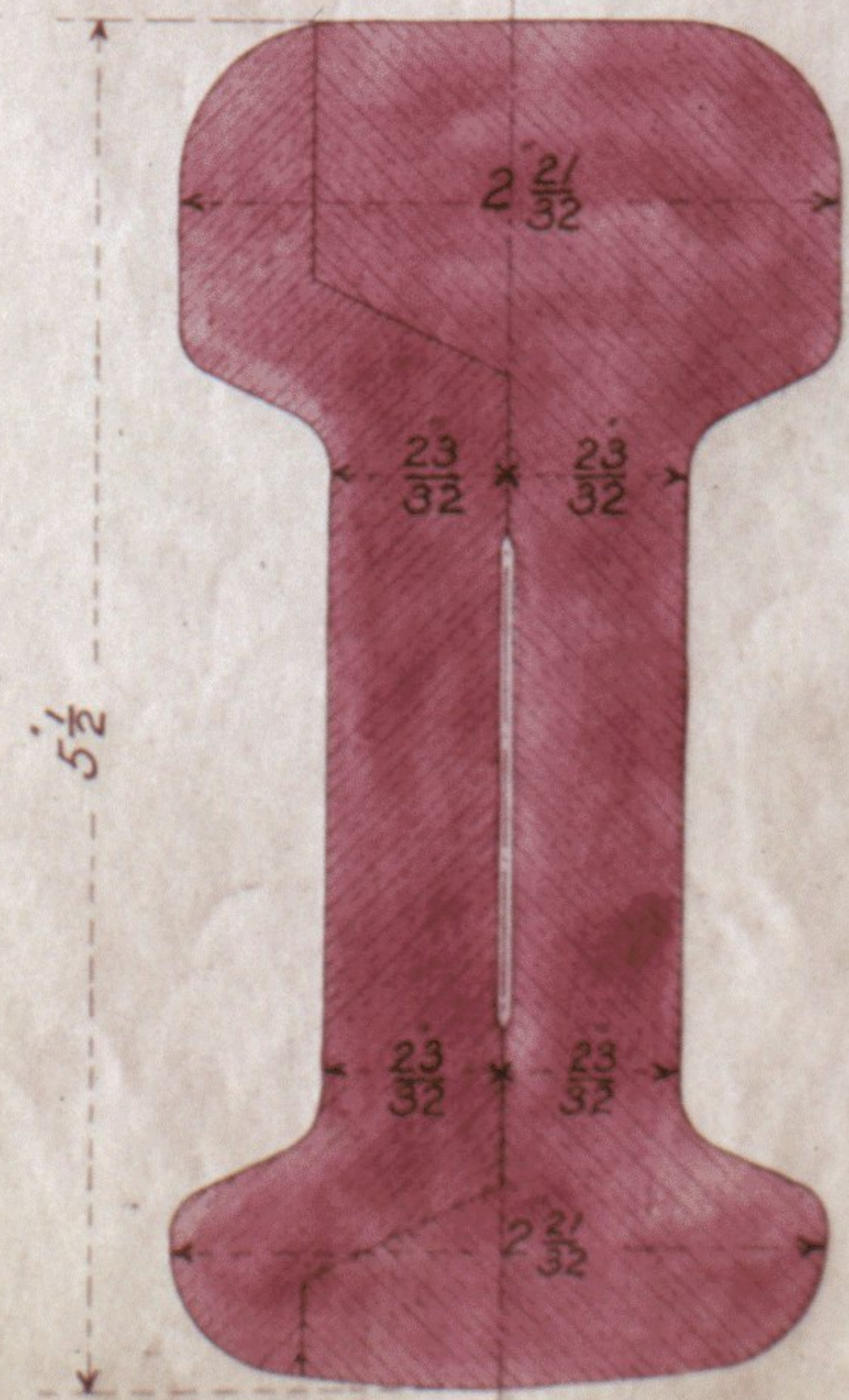
Allowed for expansion  
Projection due to inclination  $\frac{1}{4}$ "  
Clearance after expansion  
Bearing area 61.22"



SECTION A.A.



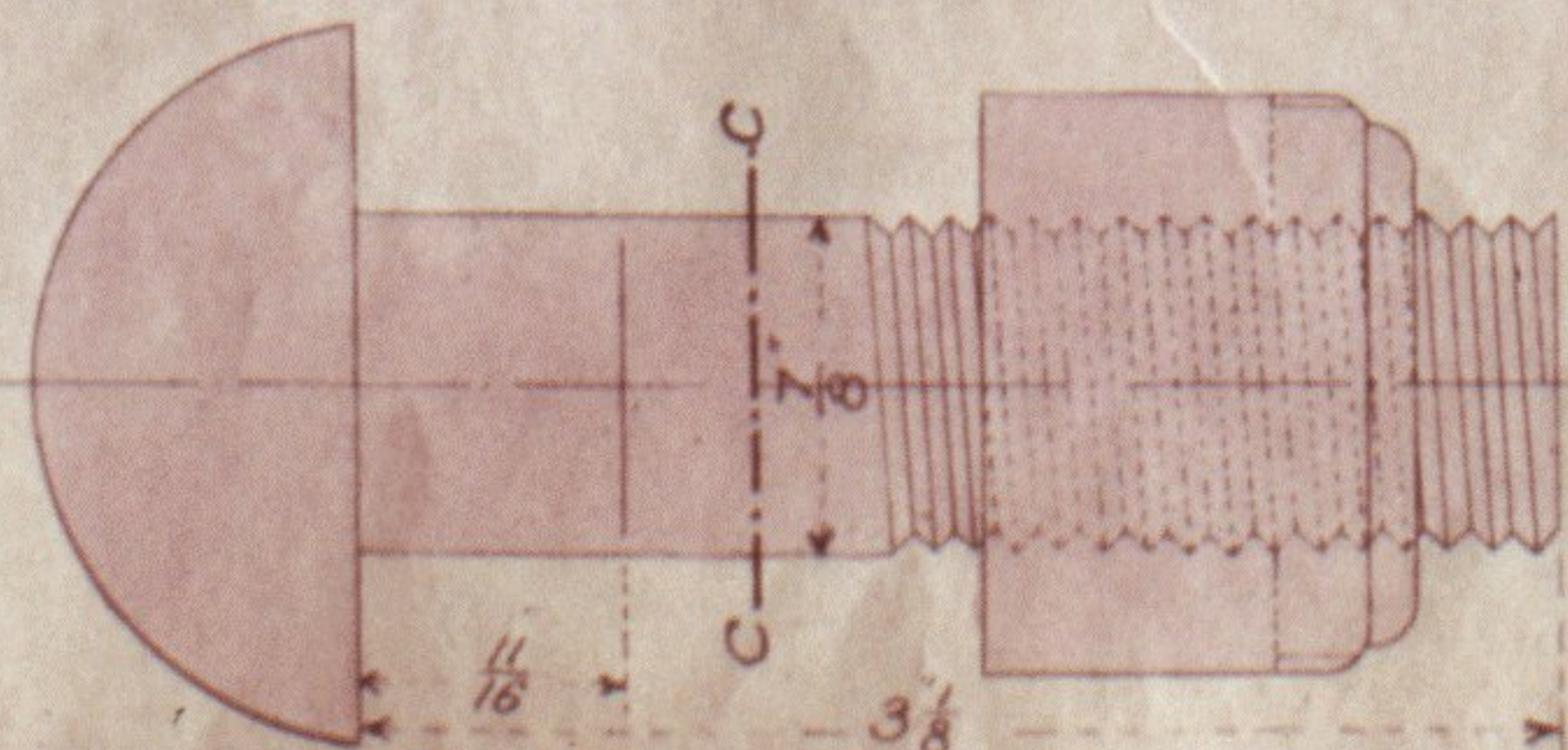
ELEVATION — HALF SIZE



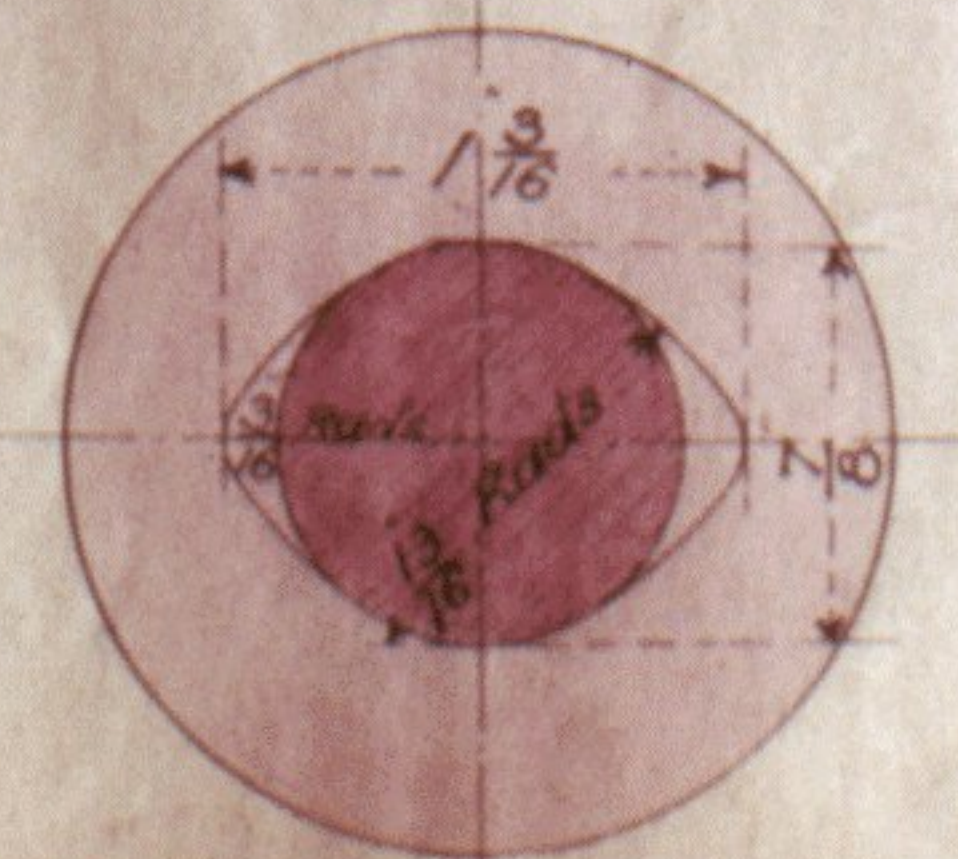
SECTION B.B.



BOLT HOLES THROUGH RAILS.



JOINT BOLT



SECTION C.C.

FULL SIZE

*H. S. Hartley & Co.*