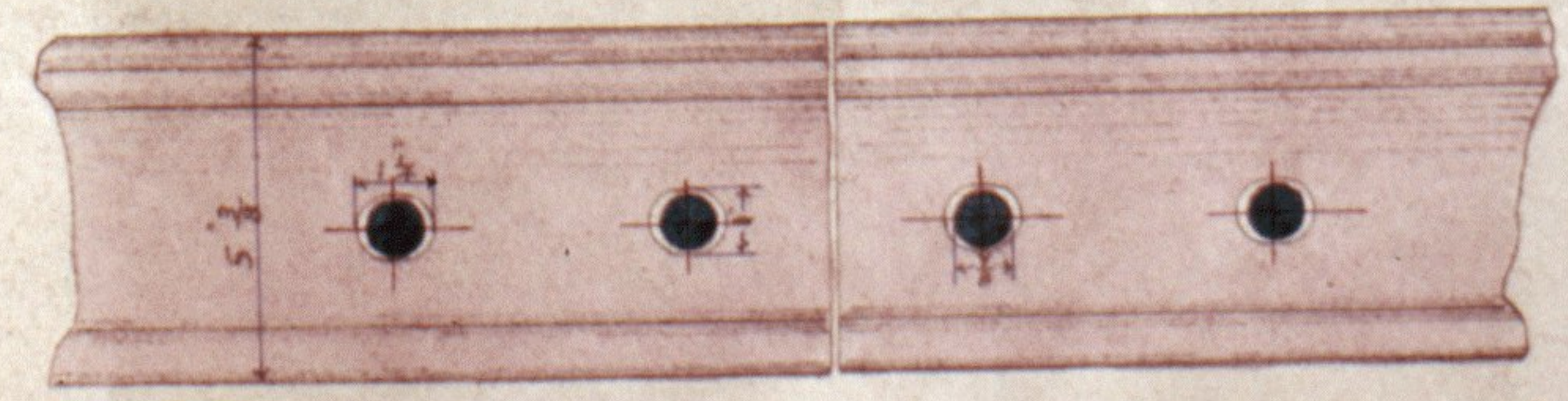
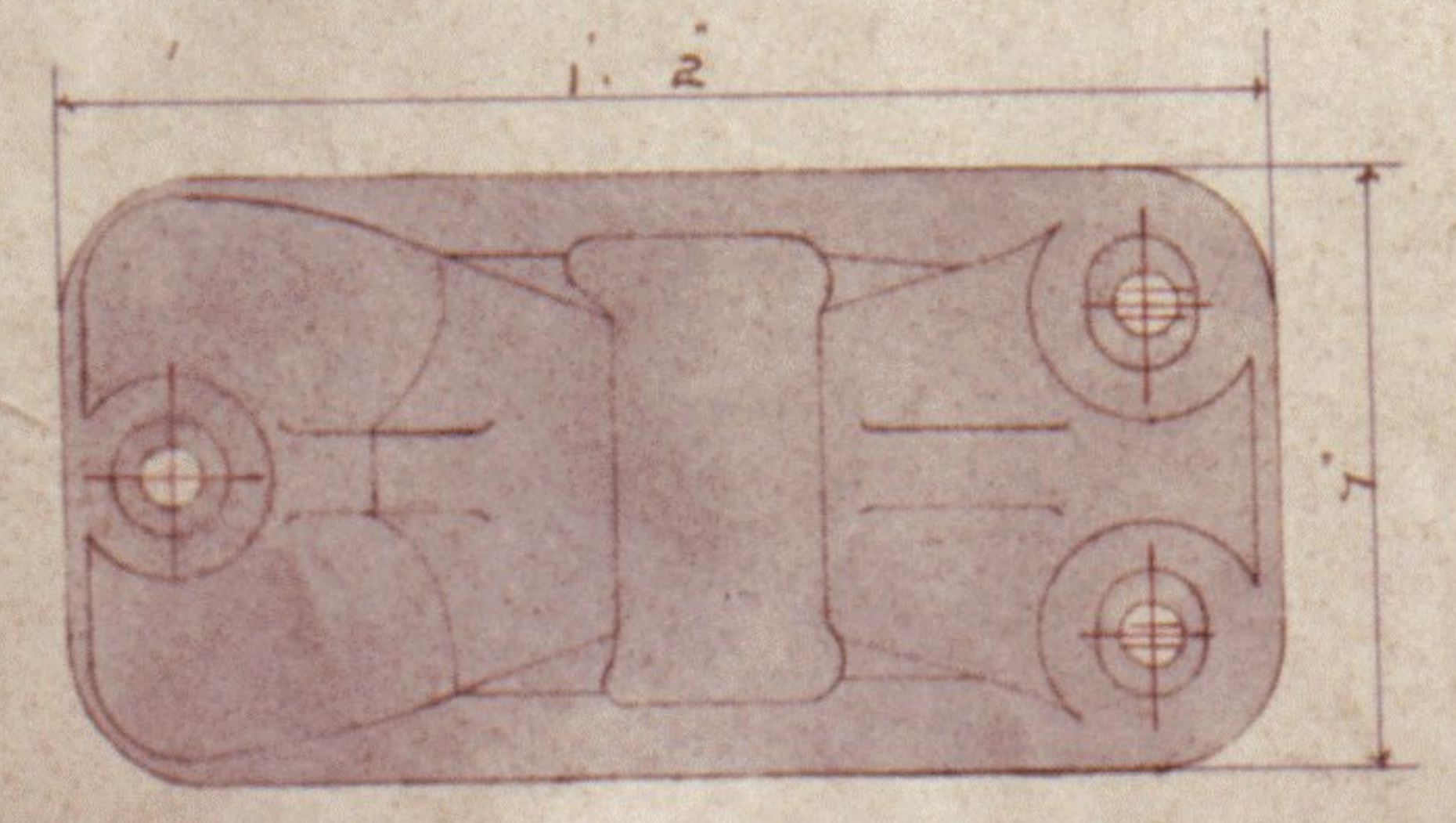
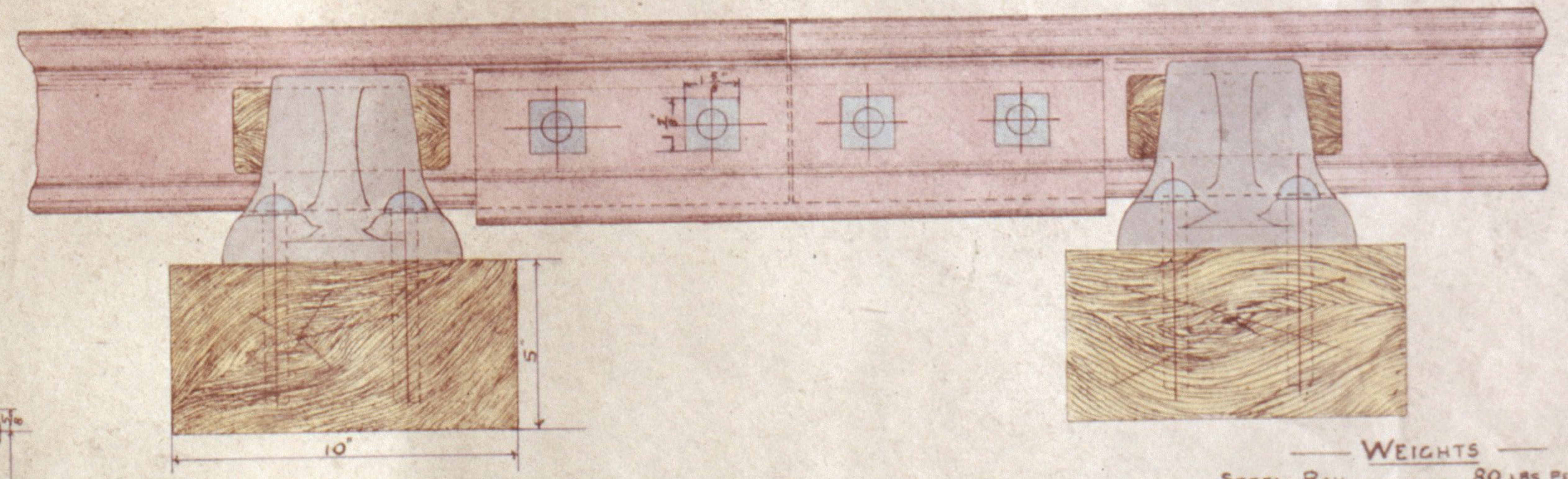
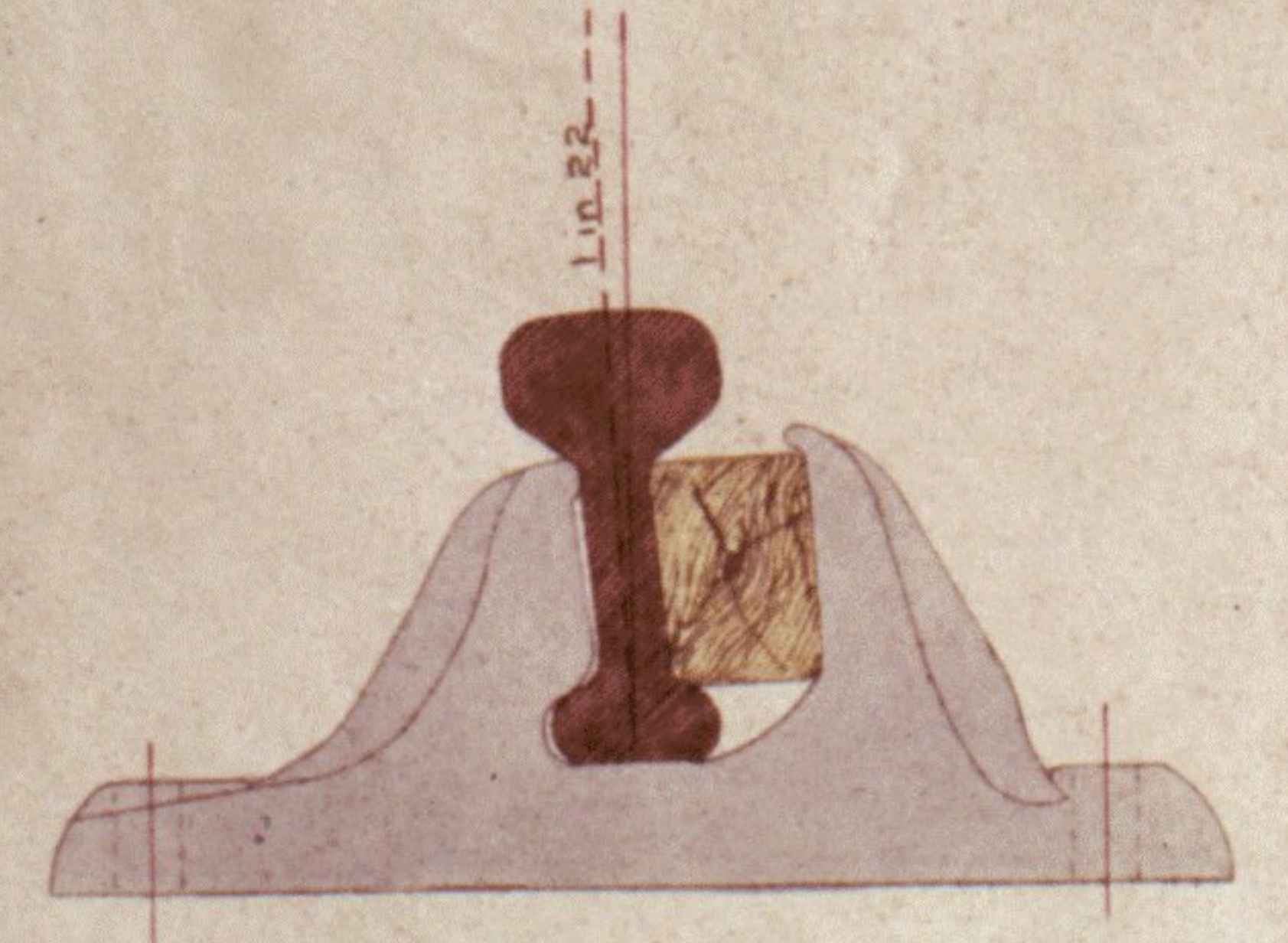
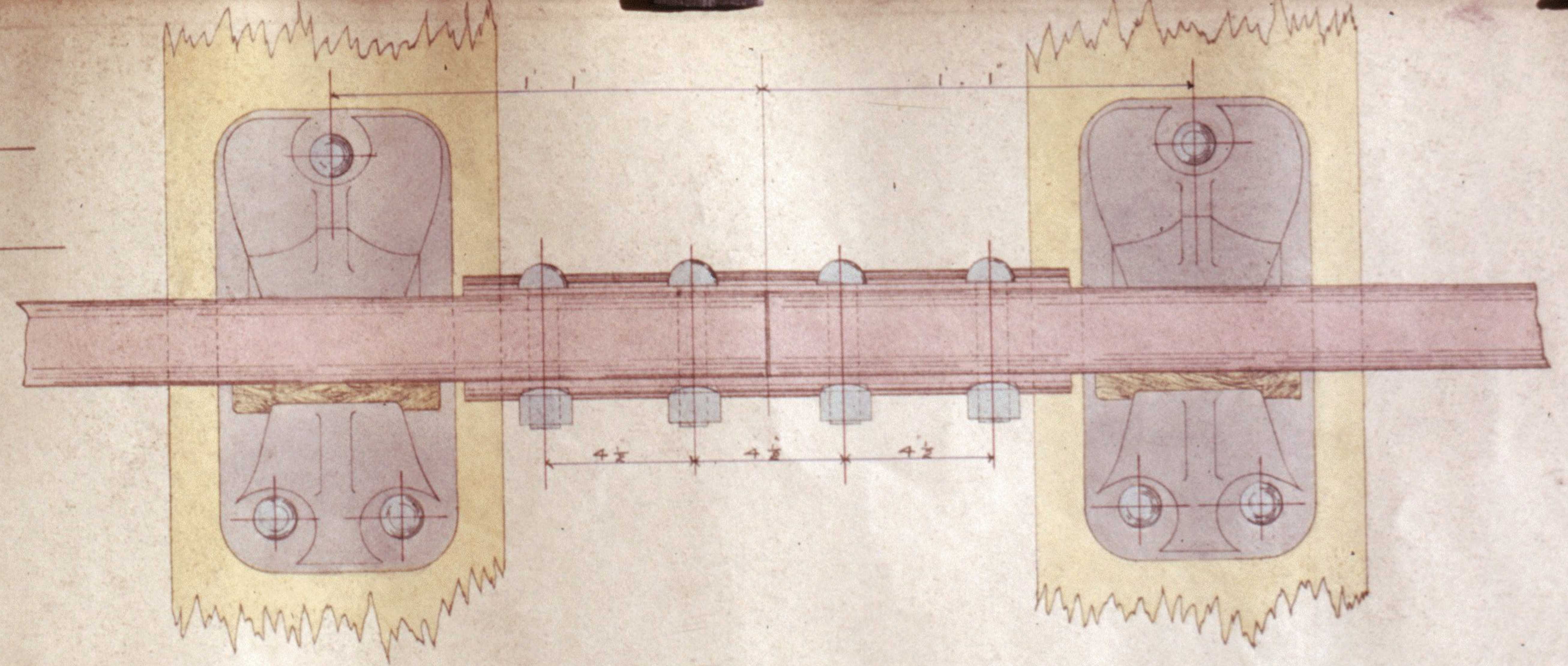


L. T. S. R.

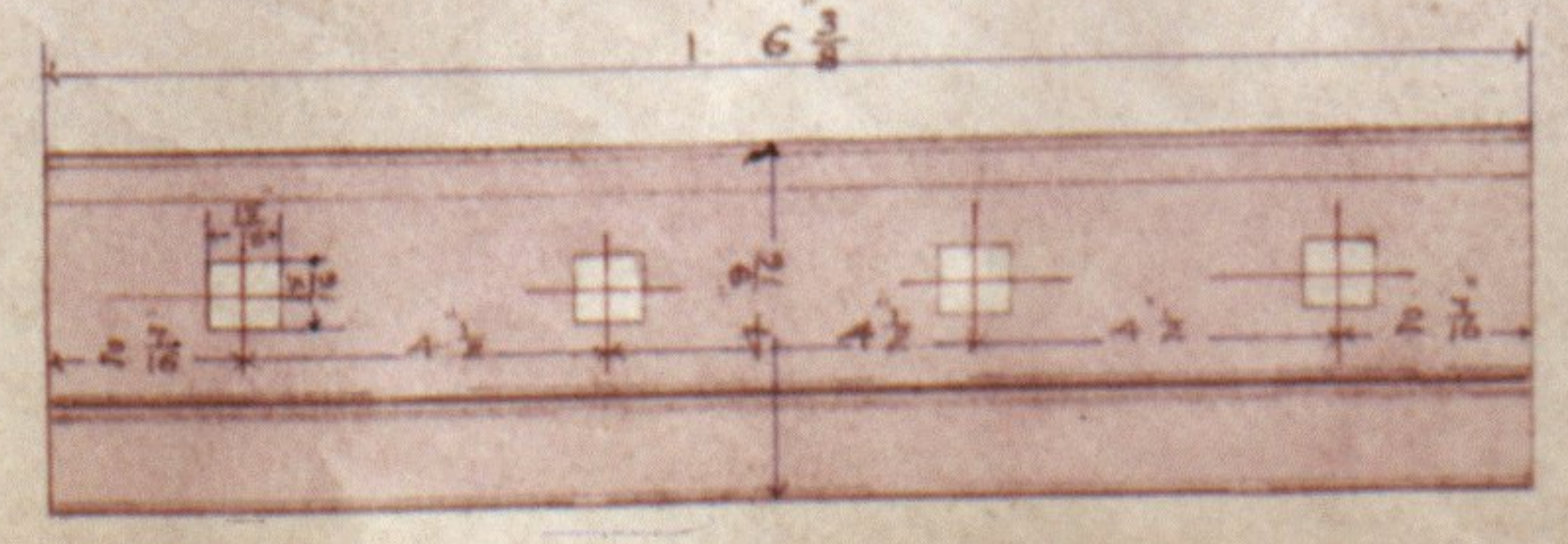
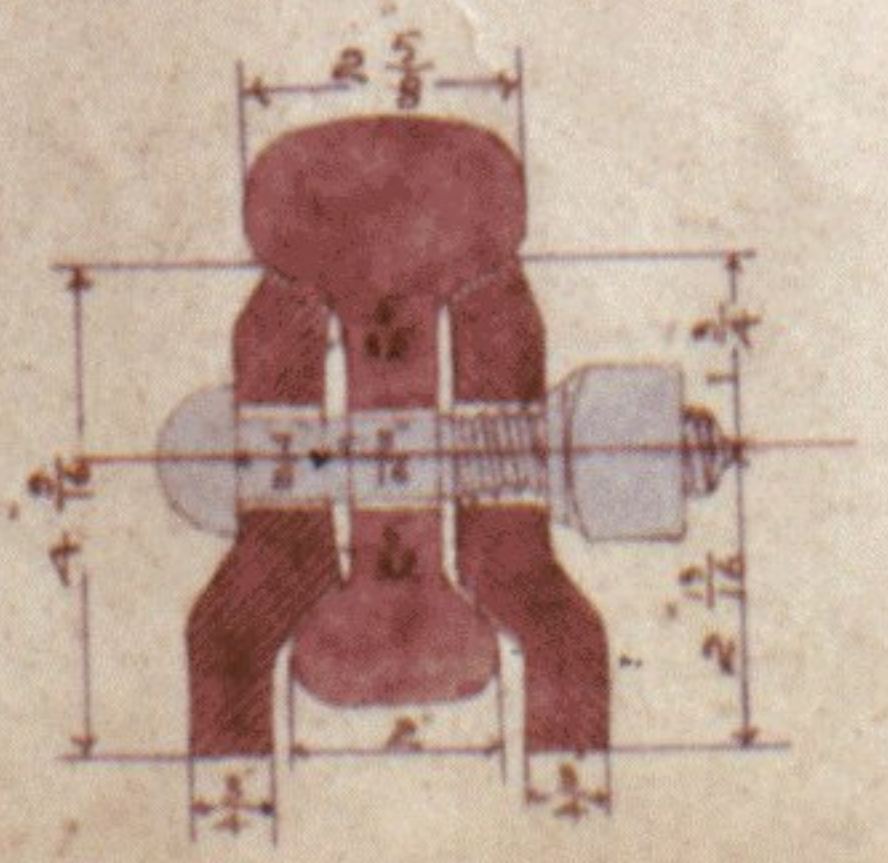
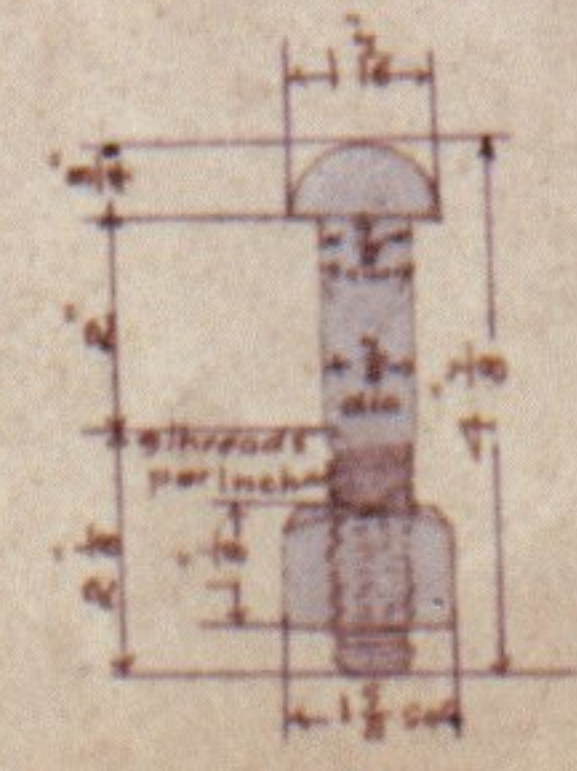
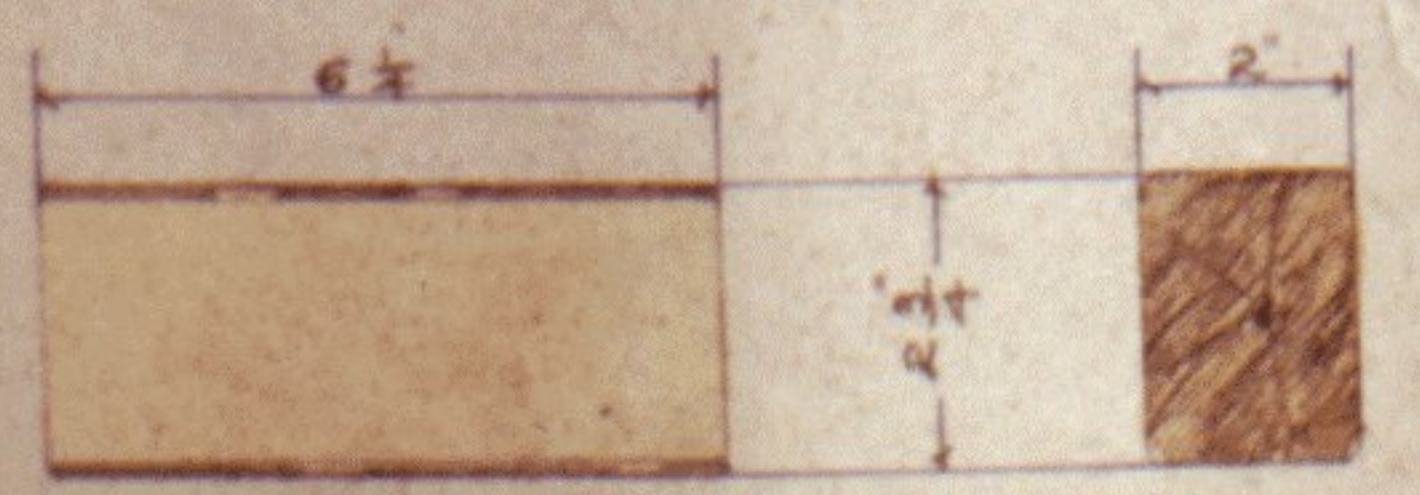
PERMANENT WAY.
STANDARD RAIL JOINT.

SCALE
3 INCHES = 1 FOOT
QUARTER FULL SIZE



WEIGHTS

STEEL RAIL	80 LBS PER YARD
STEEL FISHPLATES	38 - - PAIR
C.I. CHAIRS	45 - EACH
W.I. FISHPLATE BOLTS	1.5 -
W.I. CHAIR SPIKES	0.87 -



LONDON TILBURY & SOUTHEND
REGISTERED NO. 4923
DATE 17th April 05
ENGINEER'S OFFICE, FERCHURCH ST. E.C.