

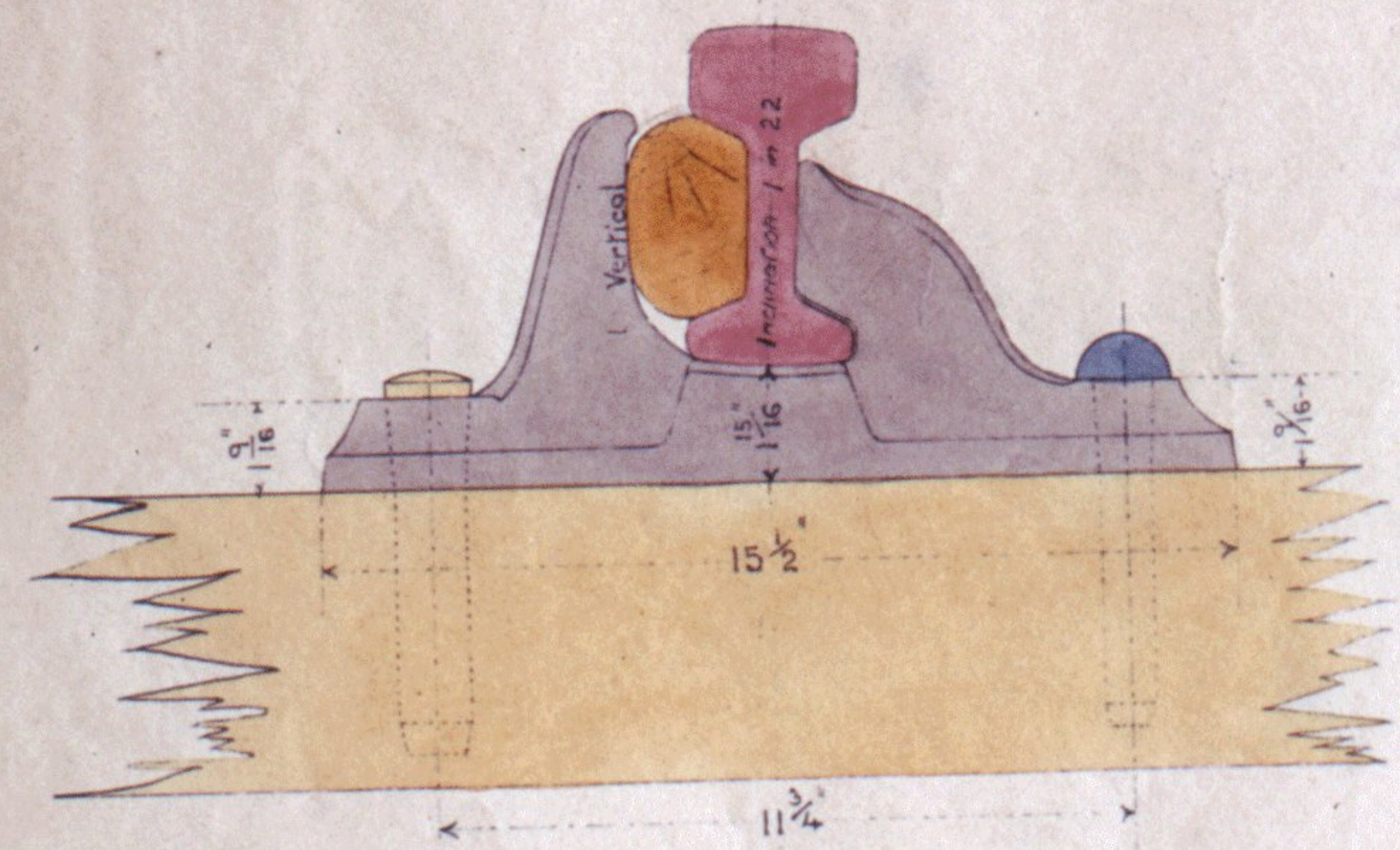
Notes. Weight of Rails. 100 lbs per Yard.

Fishplates.	36	lbs
Fishbolts & Nuts.	1 lb 10 ^{ozs}	each.
Spikes.	1 lb 4 ^{ozs}	"
Chairs.	54 lbs	"

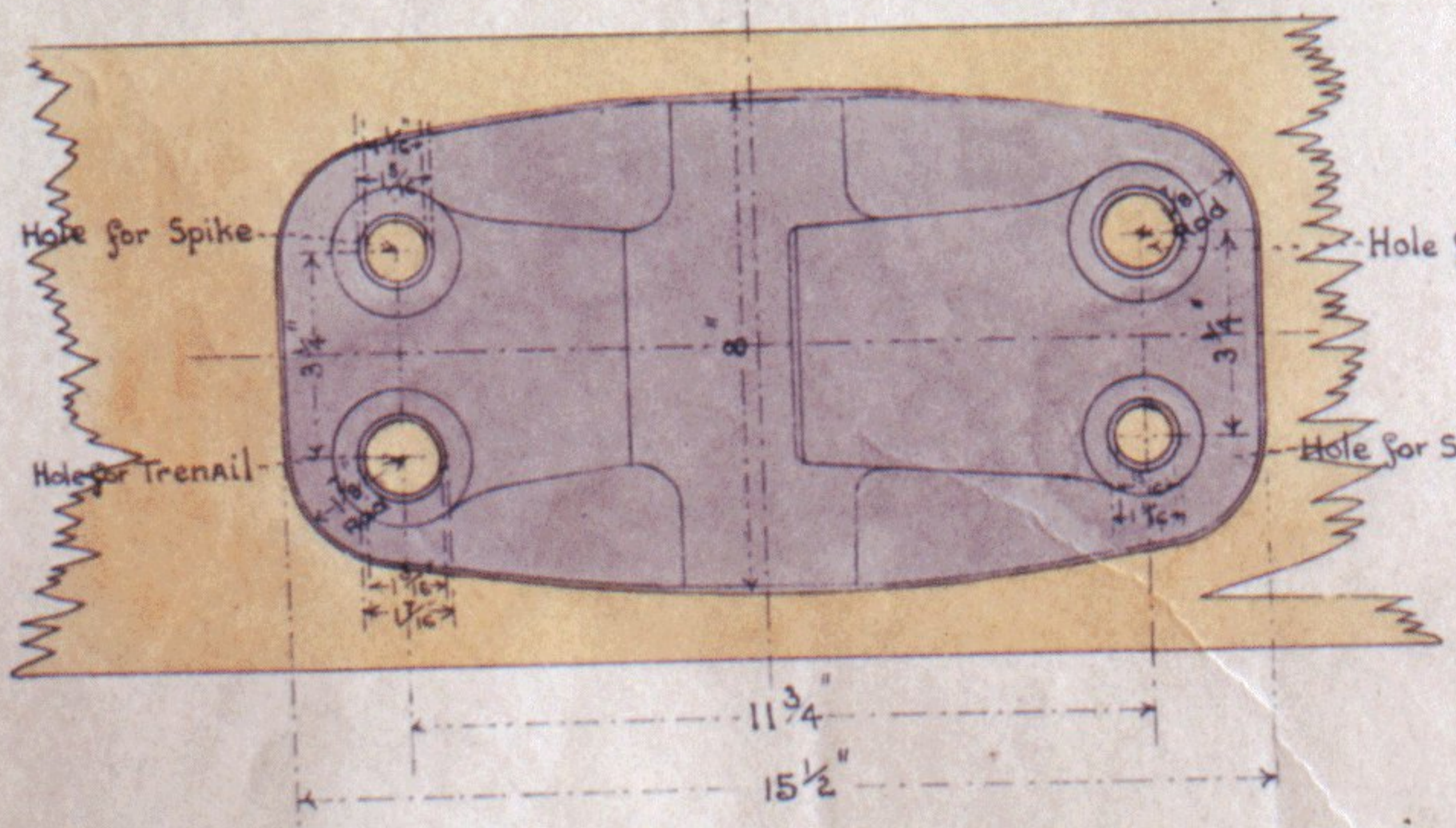
MIDLAND RAILWAY.

PERMANENT WAY, 100 LBS PATTERN.

SCALE $\frac{1}{4}$ FULL SIZE.



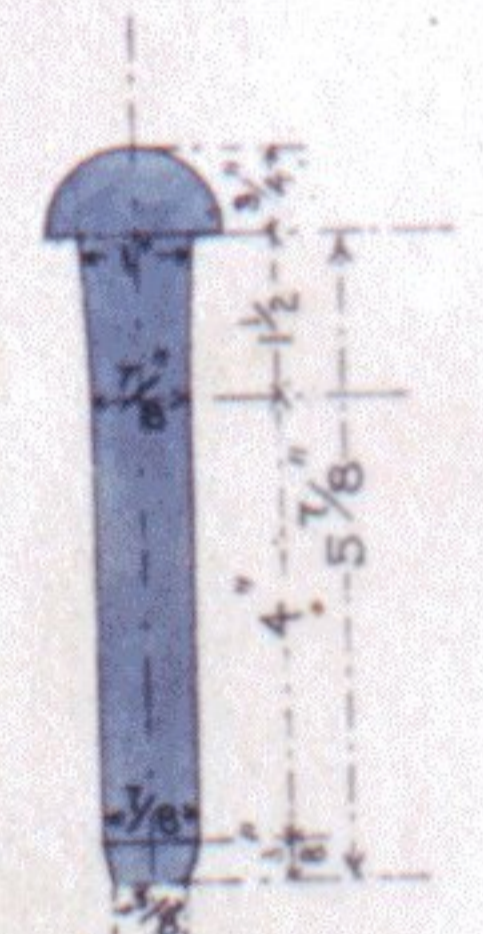
ELEVATION.
Weight of Chair 54 lbs.



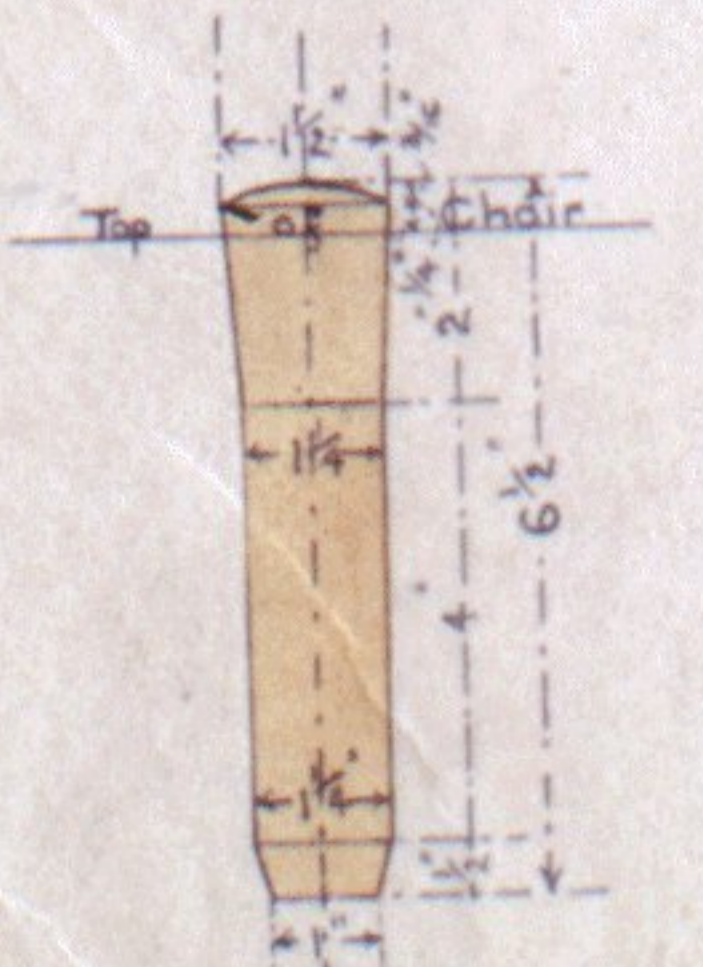
PLAN.



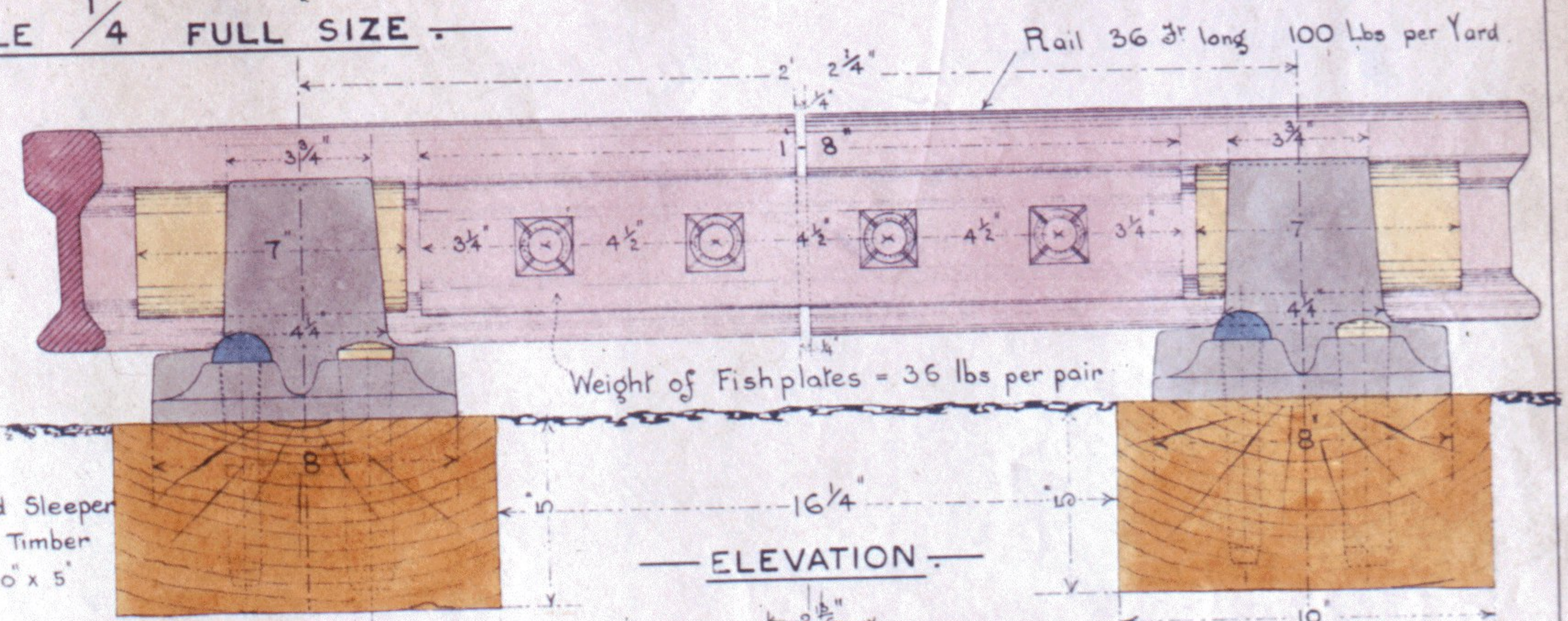
Oak Key.
7" Long.



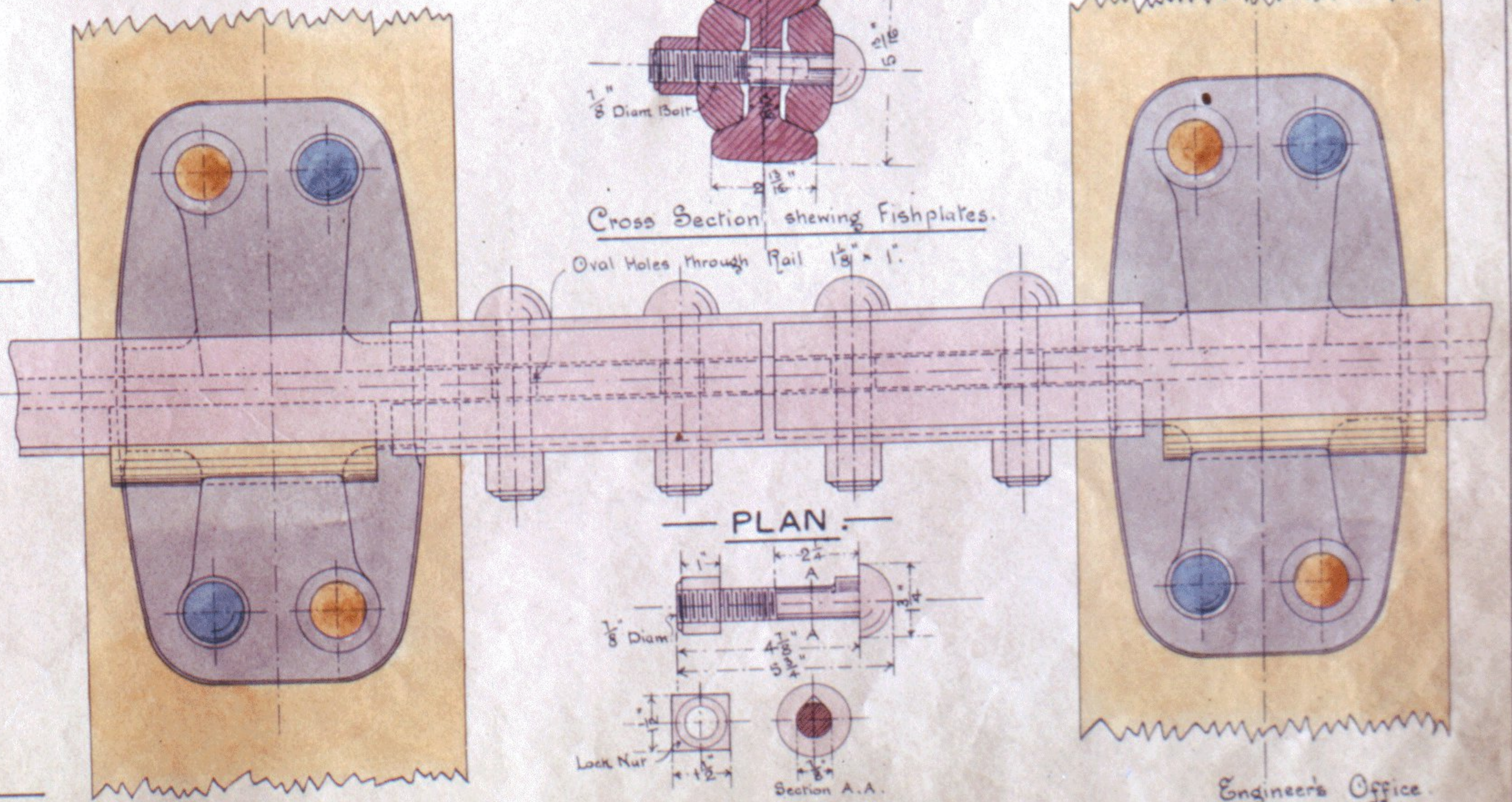
WROUGHT IRON SPIKE.
Wt 1 lb 4 ozs.



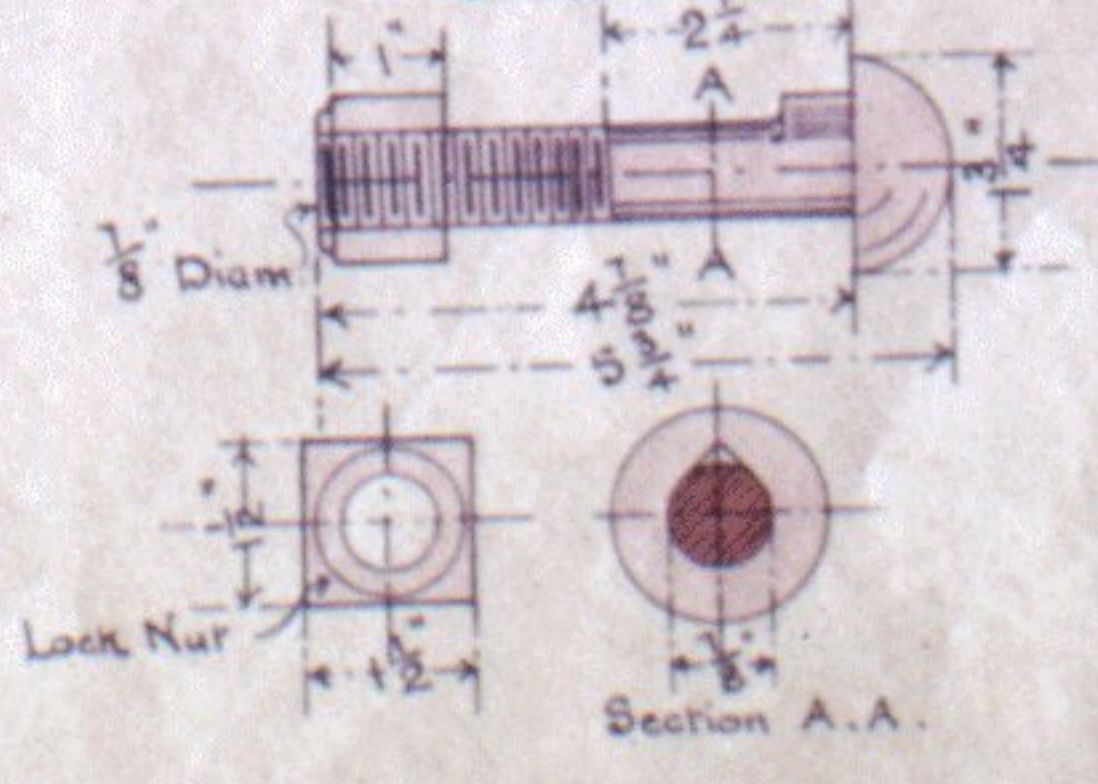
Solid Oak Trenail.
(Before driving)



ELEVATION.



PLAN.



Weight of Fish Bolt & Nut = 1 lb 10 ozs.

Weight of Fishplates = 36 lbs per pair

Crossed Sleeper
Baltic Red Timber
9' 0" x 10" x 5"

Engineer's Office
Derby. March. 1905.