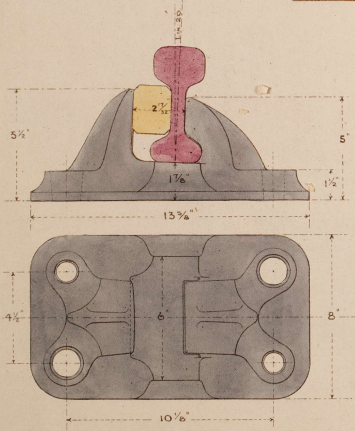
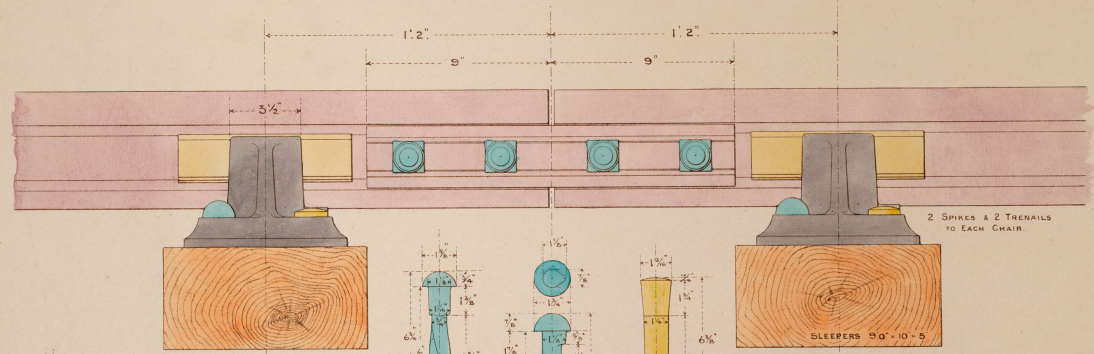
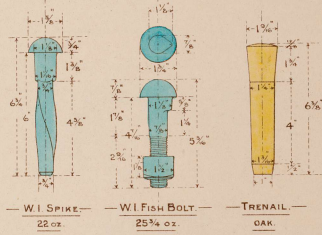


— NORTH EASTERN RAILWAY. —
STANDARD RAIL JOINT AND FASTENINGS.
 —————

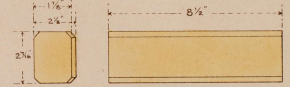
SCALE: 1/4 FULL SIZE.



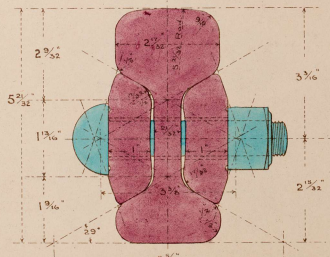
— CAST IRON CHAIR. —
 — 40 LBS. —



— W1 SPIKE — 22 oz.
 — W1 FISH BOLT — 25 3/4 oz.
 — TRENAIL — OAK.

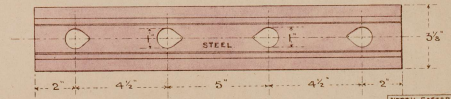
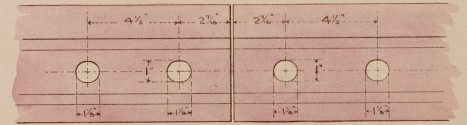


— OAK KEY. —



SECTION OF RAIL AND FISH PLATE.

— STEEL RAIL 90 LBS PER YARD. — FISH PLATE 13 1/2 LBS EACH —



— HOLES IN RAIL AND FISH PLATE. —

SCALE: 1/2 FULL SIZE.