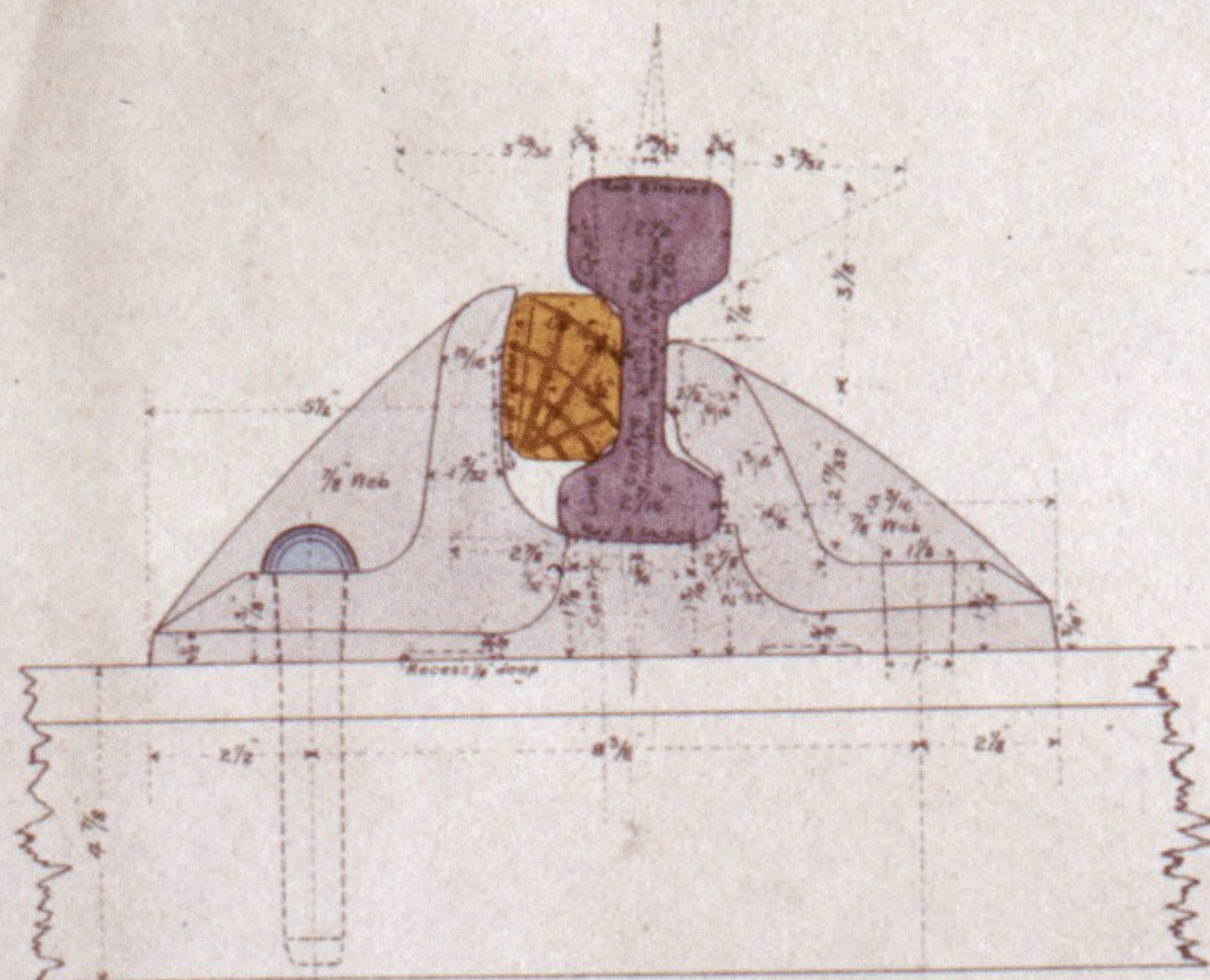


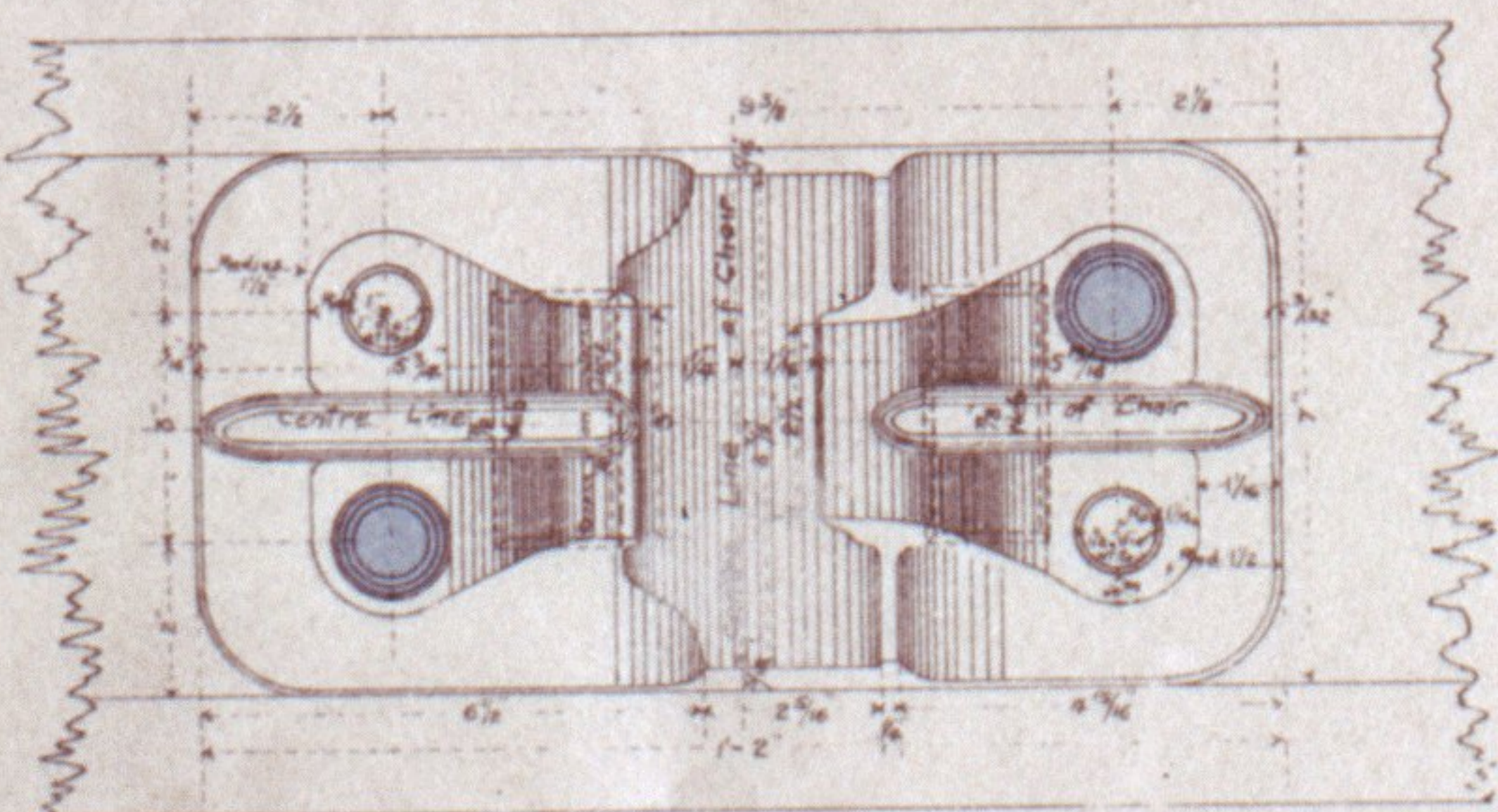
NORTH BRITISH RAILWAY.

43

DRAWING OF PERMANENT WAY

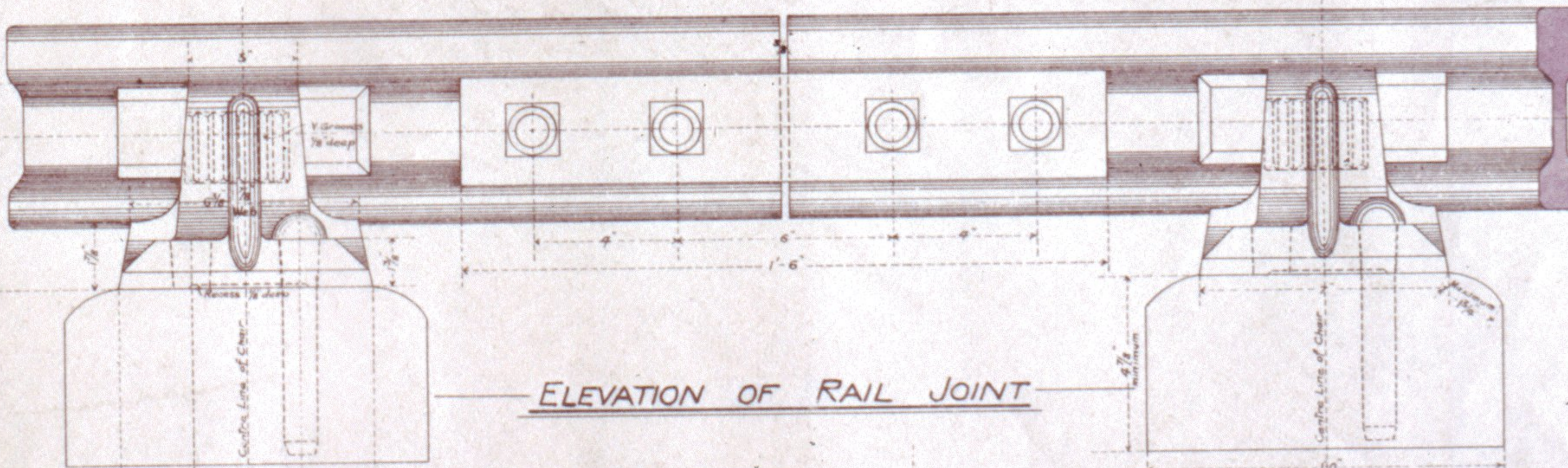


END ELEVATION

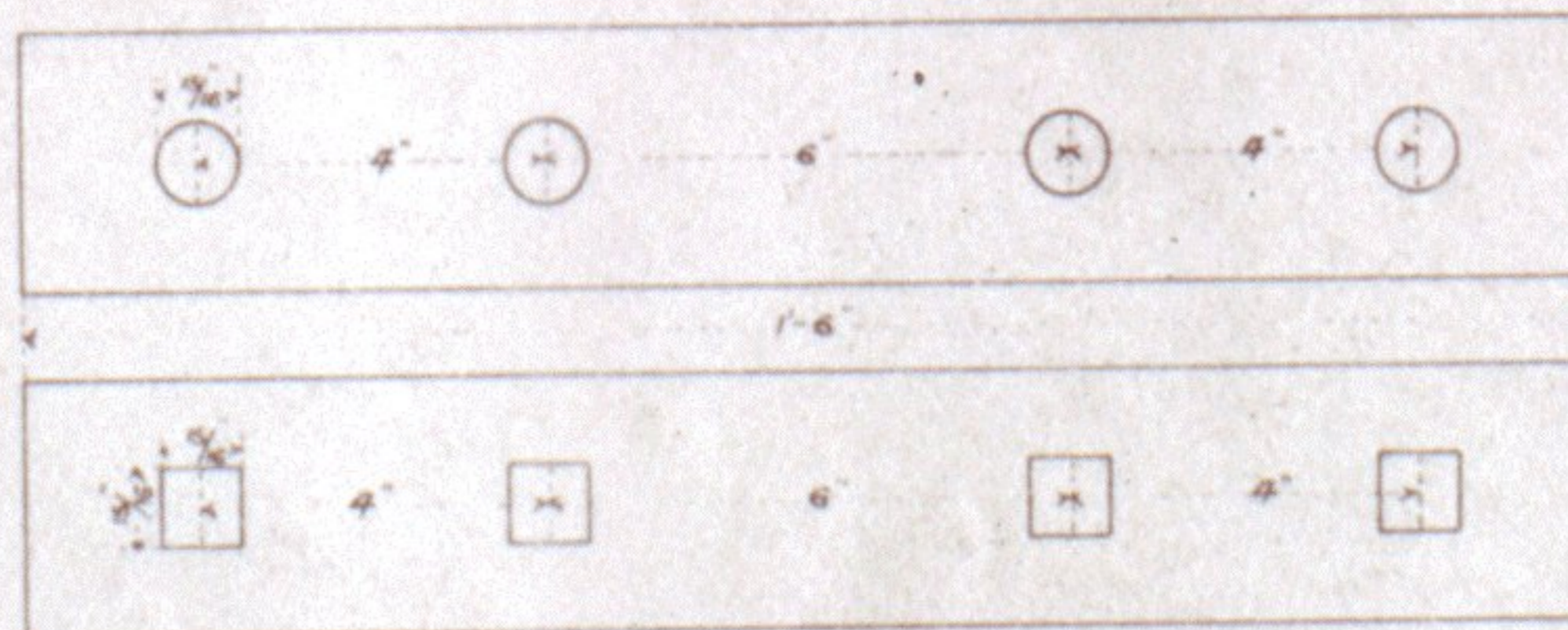


PLAN OF CAST IRON CHAIR

Weight 40 lbs.

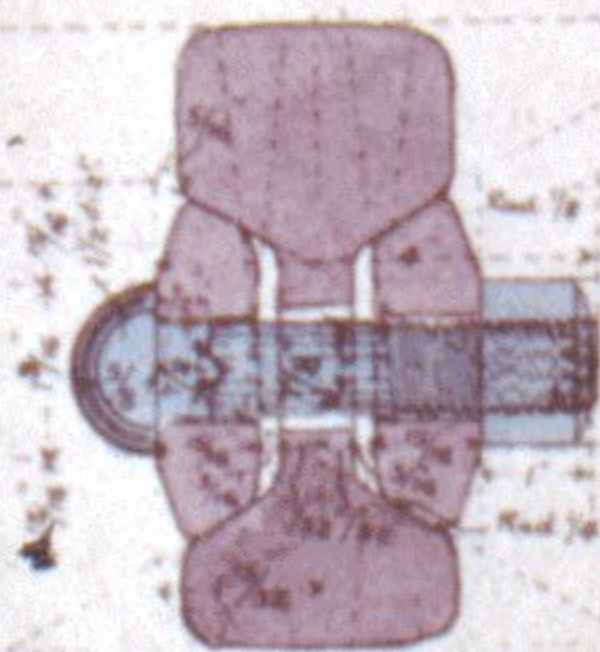


ELEVATION OF RAIL JOINT



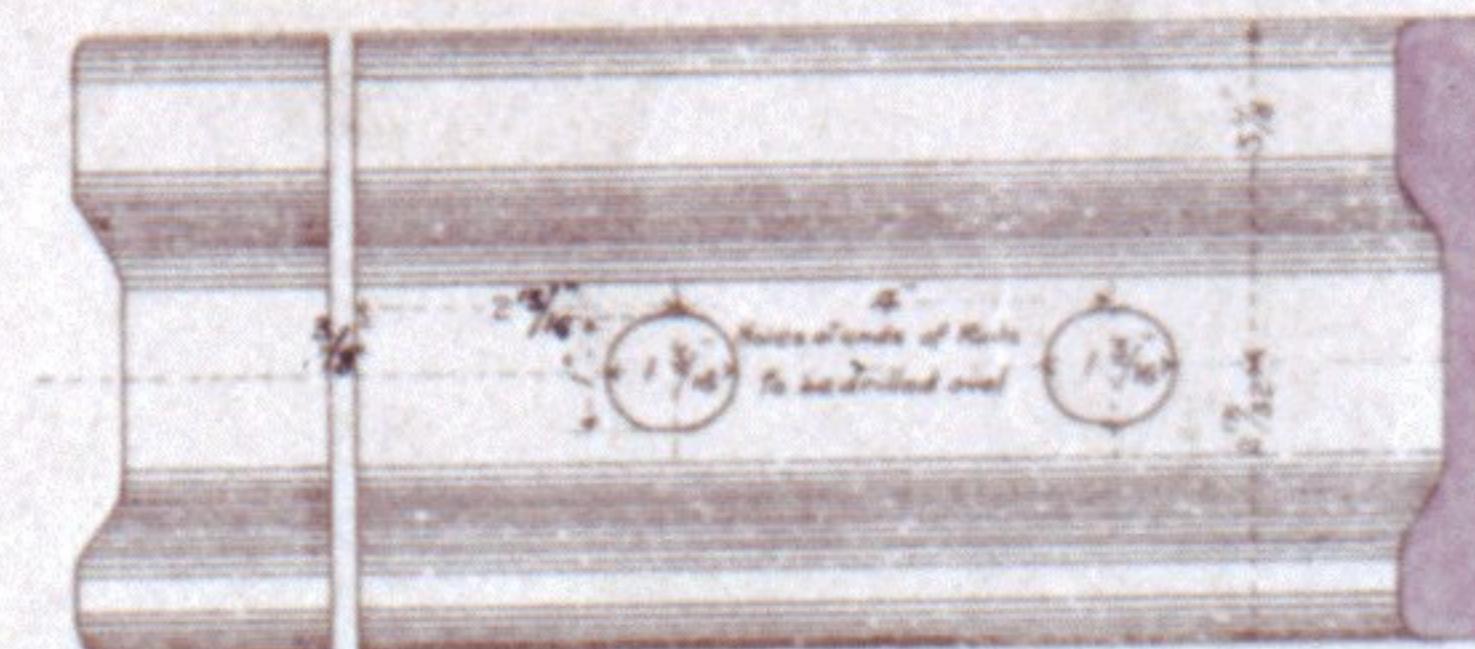
ELEVATION OF FISHPLATES

Weight 23 lbs per pair



SECTION OF RAIL
FISHPLATES & BOLT

Weight of Bolt 21 Ounces



ELEVATION OF END OF RAIL

Weight of Rail 92 lbs per Yard



END ELEVATION ELEVATION

ELEVATION OF SPIKE-DETAILS OF OAK KEY

Weight 24 Ounces



Scale (1/4 full size)

Note - Chair is fastened to Sleeper by 2 Spikes on Straights & 3 on Curves.



Shell