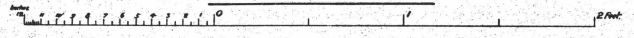
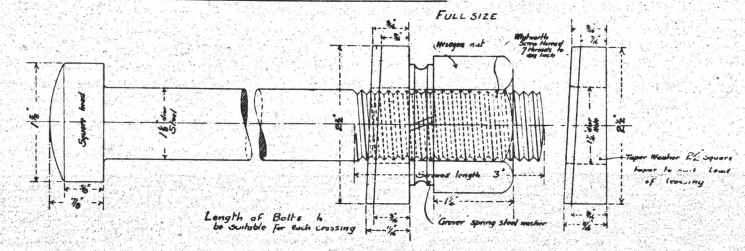


L.S.W.R. COMMON CROSSING. 1 IN 10.

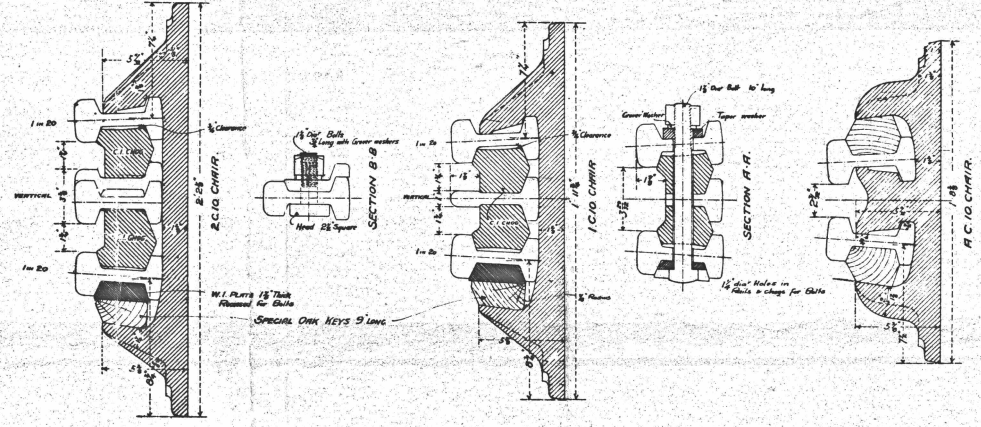
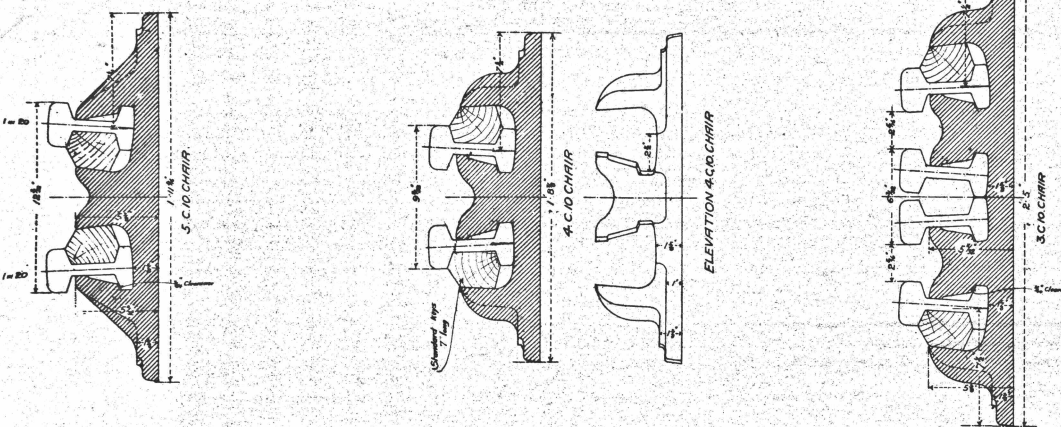
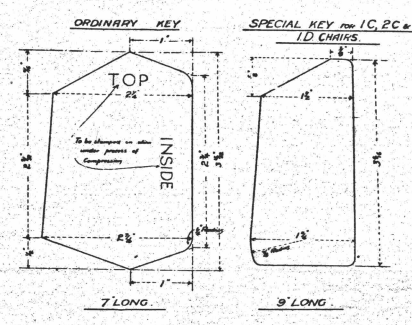
SCALE 1/2 INCHES TO A FOOT.



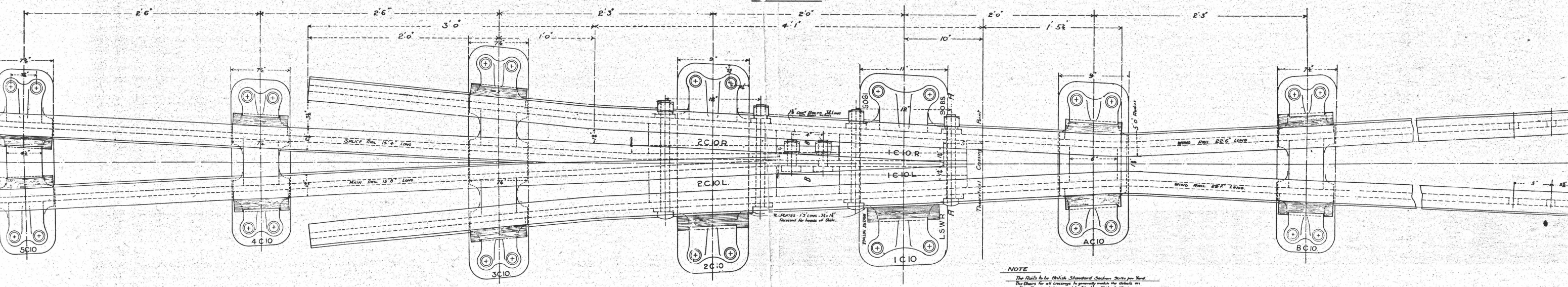
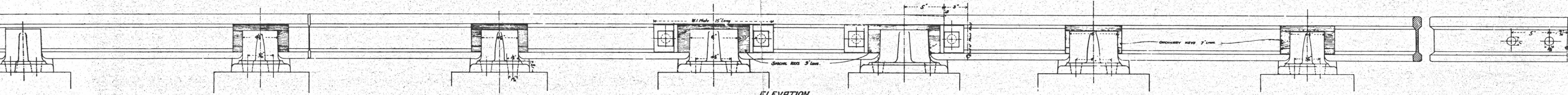
DETAIL OF BOLTS TO IC & PC CHAIRS



SECTIONS OF COMPRESSED ENGLISH OAK KEYS



SECTIONS THRO CENTRES OF CHAIRS



NOTE
 The chairs to be British Standard Section bolts per yard.
 The chairs for all crossings to generally make the details on
 this drawing to be accurate for the rails to be used.
 Each chair to have sufficient taper of manufacturer.
 Description of Chair Company's initials to be shown as
 shown on 1C10 Chair.
 The C.I. Chairs for IC & PC Chairs to suit for the rails
 to be marked as shown.