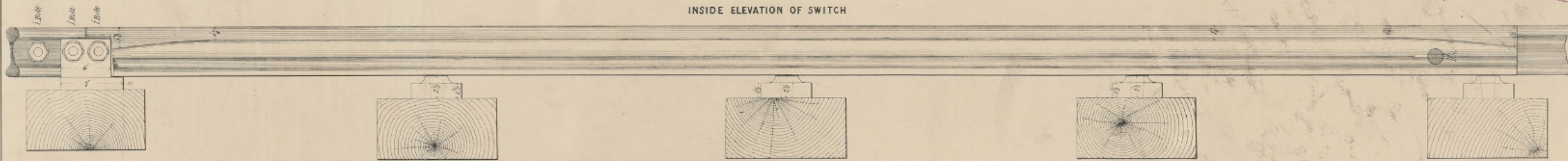


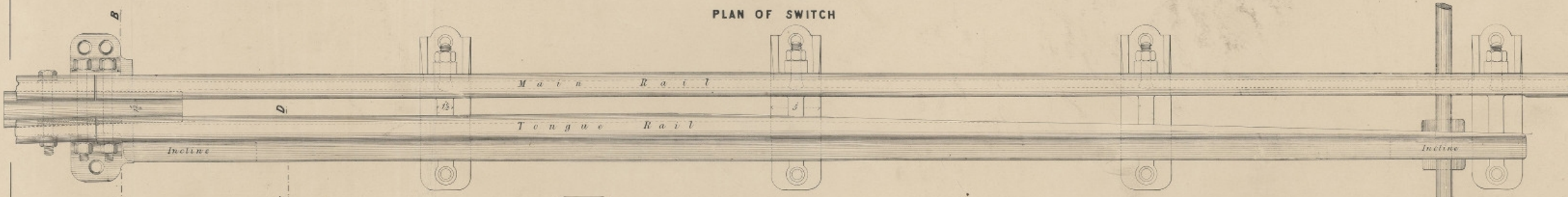
BURLEIGH'S PATENT SWITCH.

GREAT WESTERN RAILWAY
No 58742
ENGINEERS OFFICE, PADDINGTON

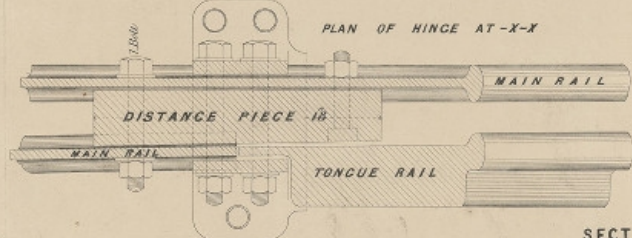
INSIDE ELEVATION OF SWITCH



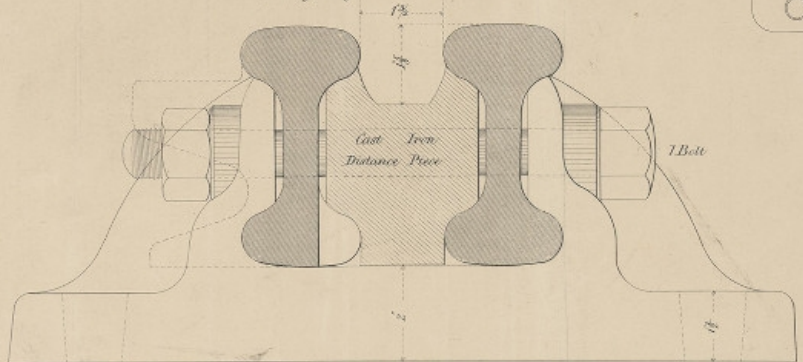
PLAN OF SWITCH



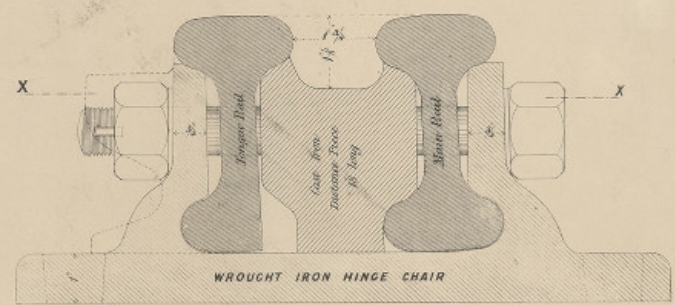
PLAN OF HINGE AT X-X



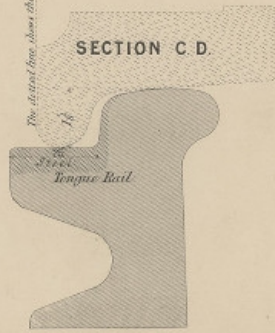
SECTION A-B
Showing Hinge Chair of Cast Iron



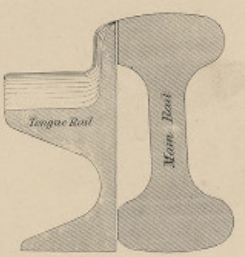
SECTION A.B.



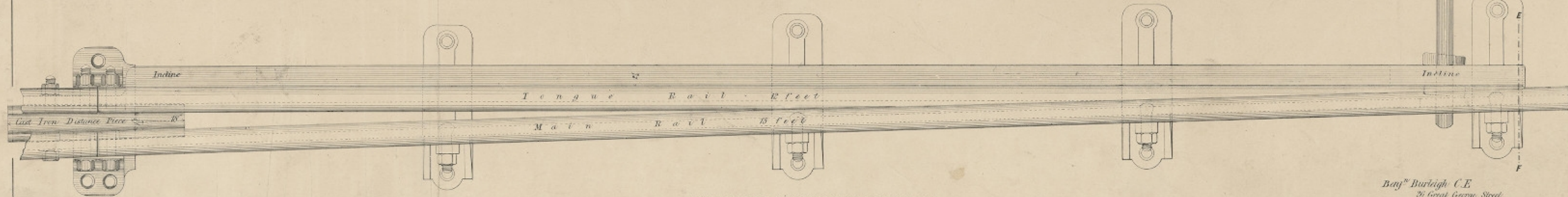
SECTION C.D.



SECTION E.F.



TO BE RETURNED TO
ENGINEER'S PLAN OFFICE,
G.W.R. PADDINGTON.



SCALE FOR PLAN & ELEVATION 2 INCHES TO A FOOT

Ben^g Burleigh C.E.
26 Great George Street
Westminster