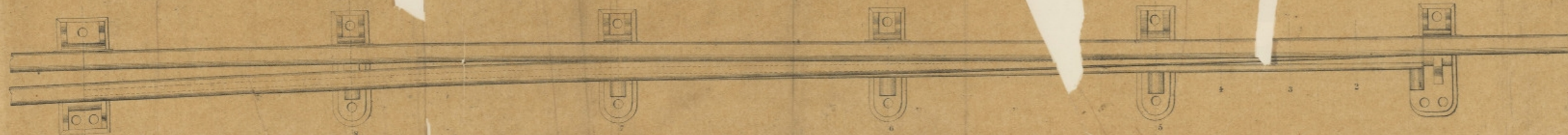


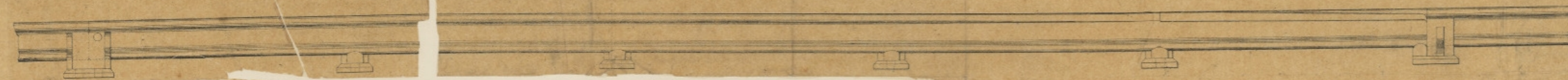
SWINGLER'S IMPROVED SWITCHES.



PLAN OF SWITCH



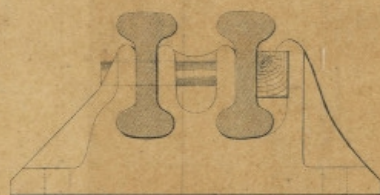
ELEVATION



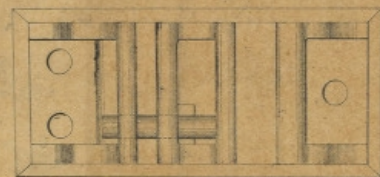
- THE ADVANTAGES OF THE SWITCHES, ARE
- 1st Improved mode of securing the Back Rail.
 - 2nd The avoidance of manipulation of the Back Rail, so that it can be replaced without sending to a manufactory.
 - 3rd The Improved Switch Chair by its curved top and form gives a better support to the Switch and prevents the risk of its action being impeded by stones or dirt.

SECTIONS OF THE SWITCH - FULL SIZE AT THE VARIOUS POINTS SHOWN ON THE PLAN.

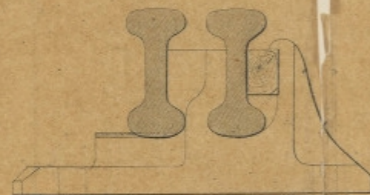
HEEL CHAIR.
Elevation.



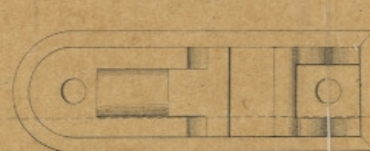
Plan



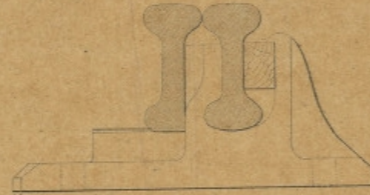
CHAIR N^o 2.
Section on the Line A.B.



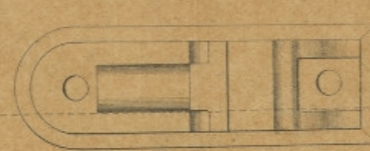
Plan



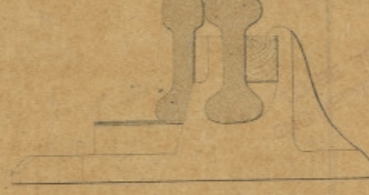
CHAIR N^o 3.
Section on the Line A.B.



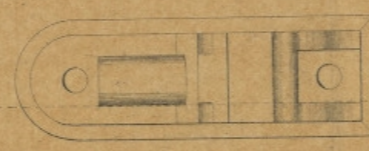
Plan



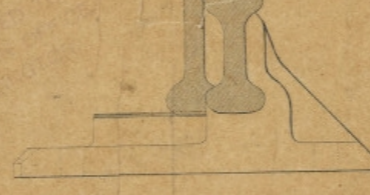
CHAIR N^o 4.
Section on the Line A.B.



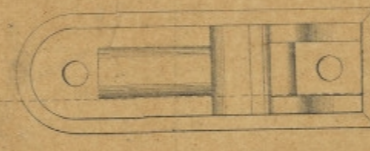
Plan



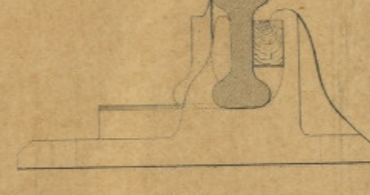
CHAIR N^o 5.
Section on the Line A.B.



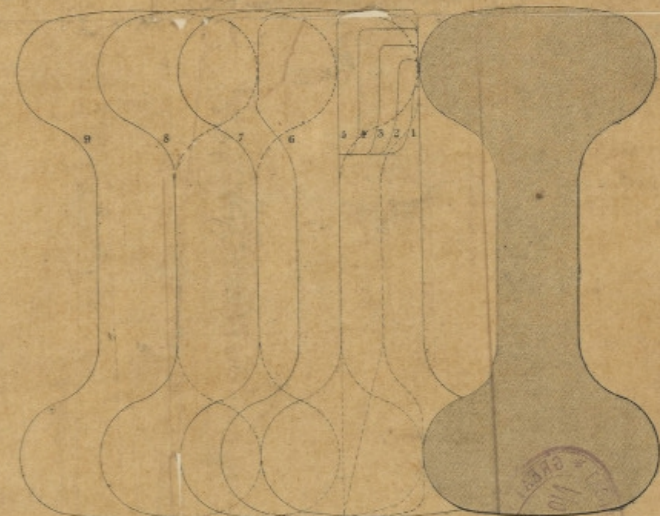
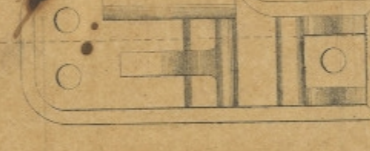
Plan



CHAIR N^o 6.
Section on the Line C.D.



Plan



SCALE FOR PLAN AND ELEVATION.



SCALE FOR ENLARGED PLANS AND SECTIONS.

