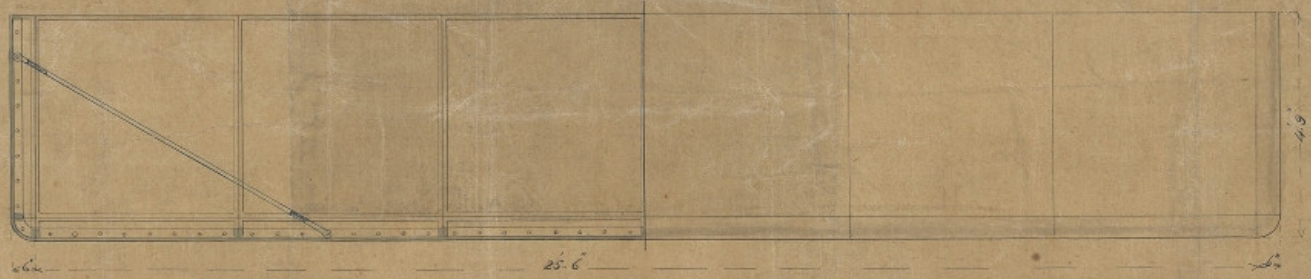


for Permanent way Dept

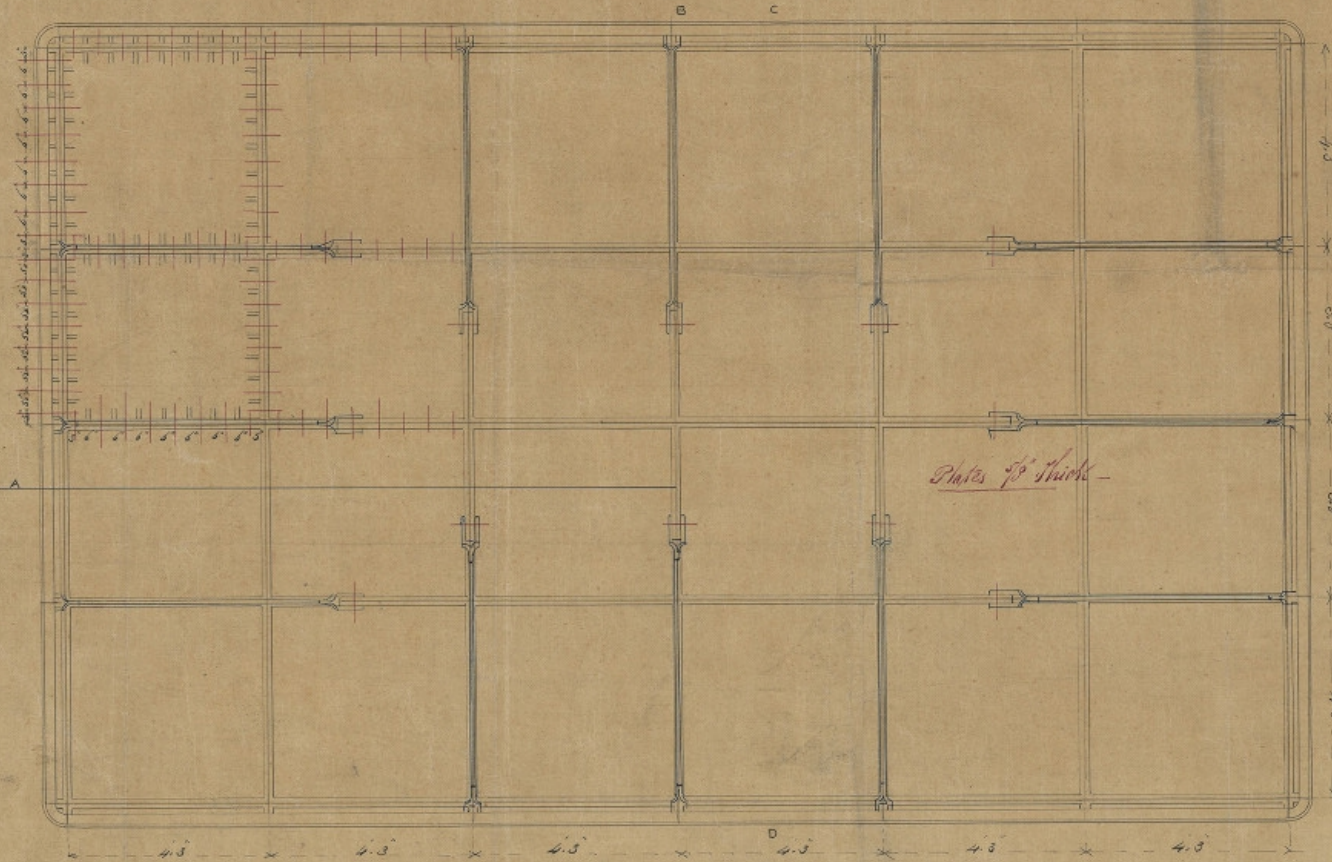
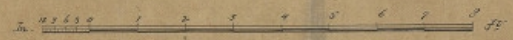
delivered to #135
fitted

27

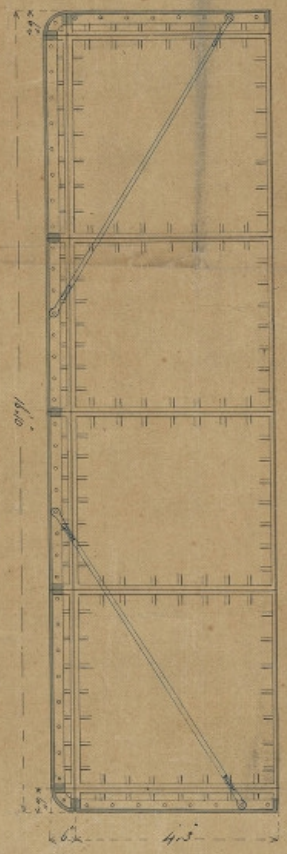
HALF SECTION - LINE AB & HALF ELEVATION.



S.W.R.
WATER TANK
FOR
NEWPORT



Plates 1/2" thick -



Tank 25.5 long
" 17.8 wide
" 4.9 deep
Plates 1/2" square x 1/2" thick
including 10 wrought iron straps

ENGINEER

Wre returned to
Capt. Poncella
20 June 1886