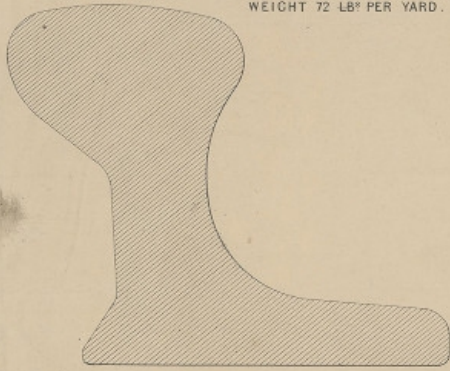


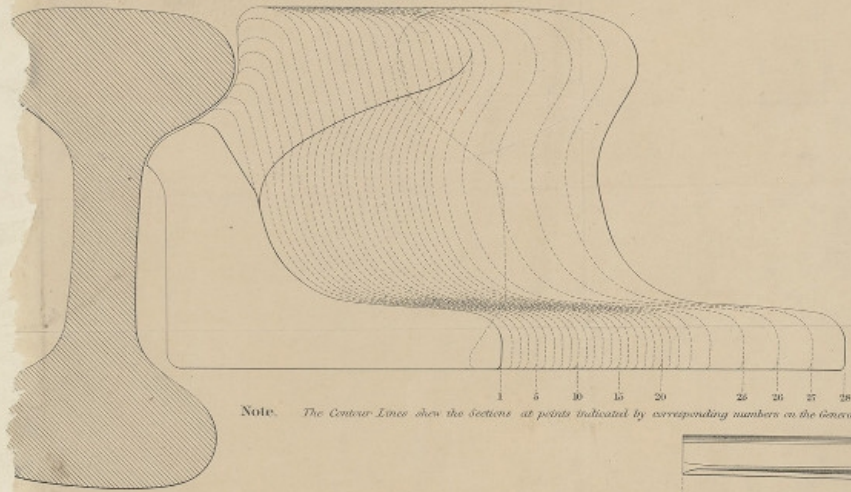
SECTION OF TONGUE RAIL, FULL SIZE.
WEIGHT 72 LB^r PER YARD.



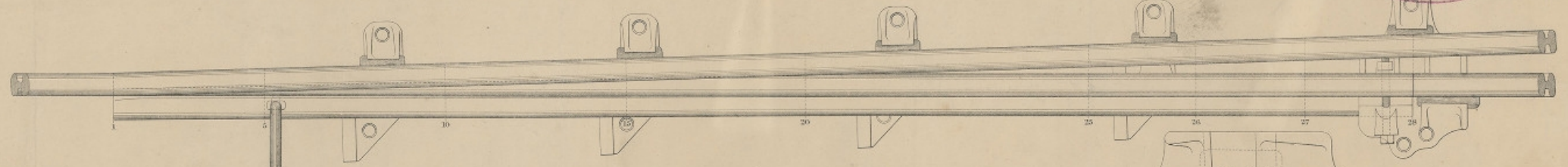
WILD & PARSONS' PATENT SWITCH.



SECTION THROUGH FIXED RAIL WITH END VIEW OF TONGUE RAIL.



Note. The Center Lines show the Sections at points indicated by corresponding numbers on the General Plan.

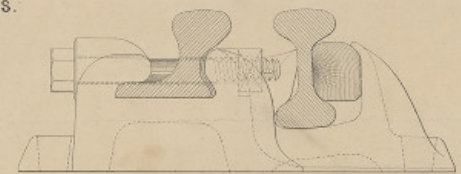
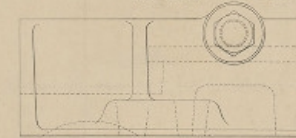
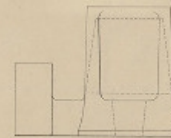
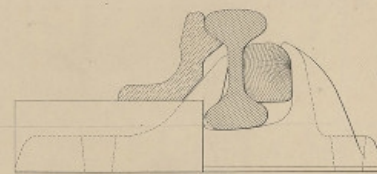
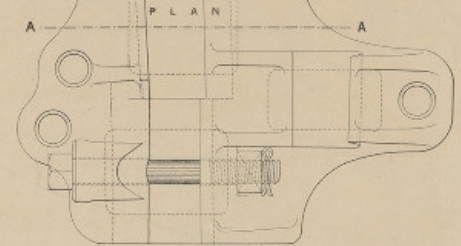
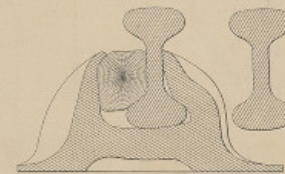
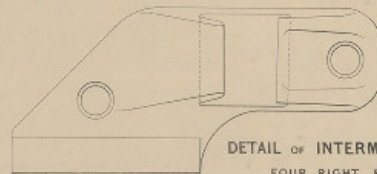


PLAN

SECTION AT A.A.

DETAIL OF INTERMEDIATE CHAIRS.
FOUR RIGHT & FOUR LEFT.

DETAIL OF JOINT CHAIRS.
ONE RIGHT & ONE LEFT.



END VIEW.

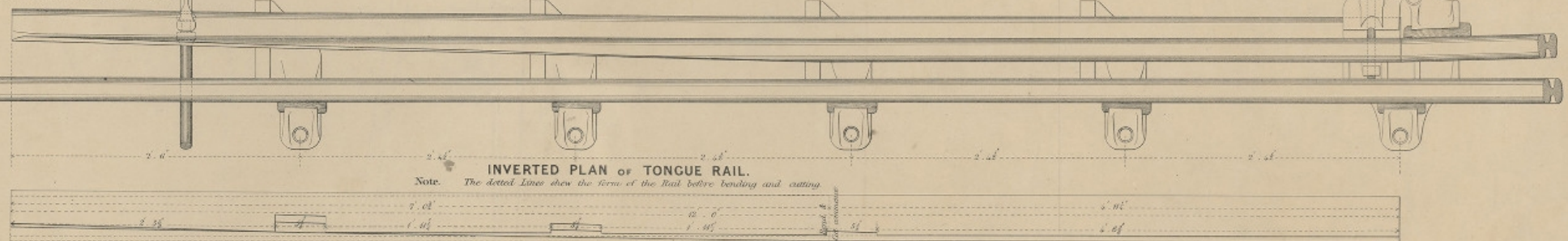
OUTSIDE VIEW.

INSIDE VIEW.

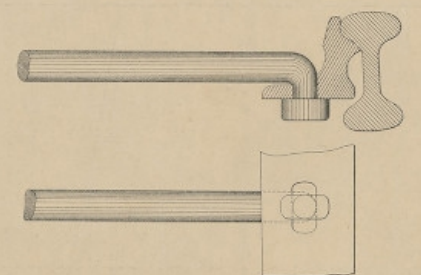
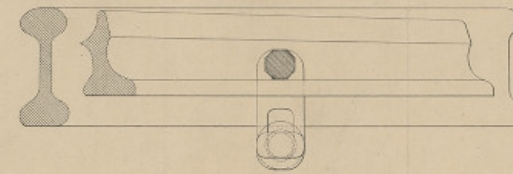
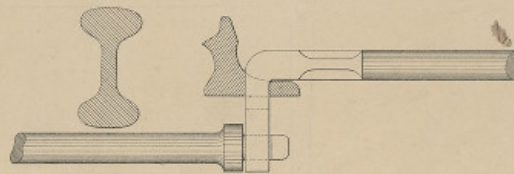
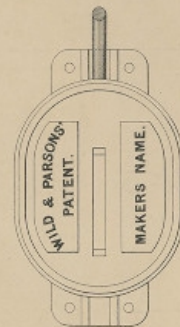
END VIEW.

INVERTED PLAN OF TONGUE RAIL.

Note. The dotted Lines show the form of the Rail before bending and cutting.



DETAIL OF CONNECTING ROD.



SCALE FOR GENERAL VIEWS.

SCALE FOR DETAILS.

In this Switch the increased width of base of the Tongue Rail gives it greater stability and lateral strength.
The points of the Tongue Rail is housed under, instead of being notched into the table of the fixed Rail, by which all notches and inequalities at the junction are avoided.
The fixed Rails are secured into the Chairs by wooden or other wedges, instead of by pins, and the lever Rod is made to pass under, instead of through a hole in the fixed Rail.
The fixed Rails consequently require neither drilling, cutting nor any preparation whatever, so that they can be supplied from the ordinary Rails used on the Lines, by which the first cost is reduced, arrange of the fixed Rails saved, and future repairs facilitated.
The tables of the Chairs on which the Tongues slide being elevated are easily oiled and cleaned, and render the Tongues less liable to get choked with ballast.
The arrangement of the connecting Rod is exceedingly secure, as it can not possibly become loosened except by a fracture of some of the parts.

A SET OF SWITCHES CONSISTS OF

- 2 Tongue Rails, each 12 feet long
- 2 fixed Chairs
- 8 Intermediate Chairs
- 1 Lever Box, Connecting Rods, Weights, &c.

In cases where the Tongues are ordered of a greater length than 12 feet, an additional Intermediate Chair will be required to each Tongue for every addition to its length of 2 1/2 fms or part thereof.

Victoria Street Westminster Abbey S.W.

TO BE RETURNED TO
ENGINEER'S OFFICE
G.W.F. BRISTOL