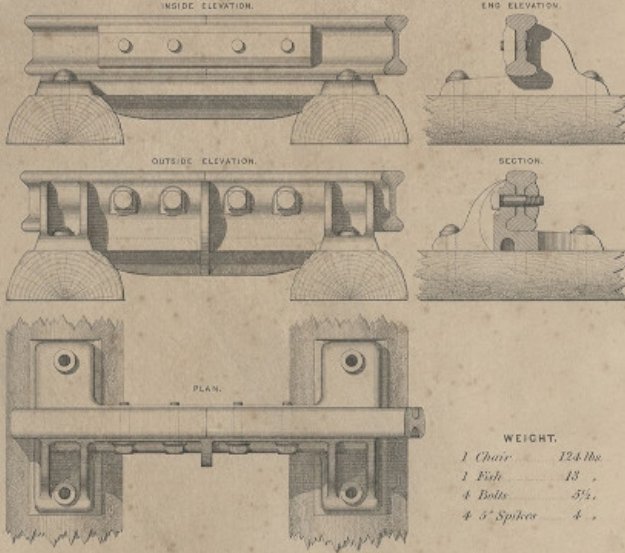


NENT WAY COMPANY.

ORGE STREET, WESTMINSTER.

FASTENINGS NOW USED ON RAILWAYS.

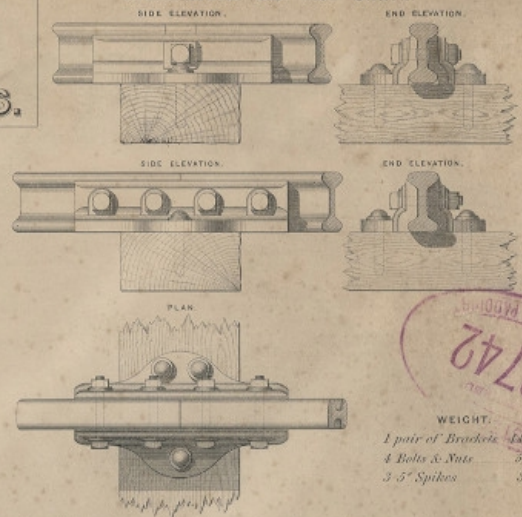
JAMES SAMUEL'S DOUBLE FISH CHAIR.



WEIGHT.
 1 Chair 124 lbs
 1 Fish 13 "
 4 Bolts 5 1/2 "
 4 5" Spikes 4 "

WEIGHT.
 46 1/2 lbs
 11 "
 Washers 5 1/2 "
 3 "

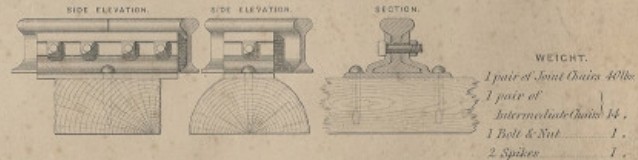
R. C. MANSELL'S CAST IRON CHAIR.



WEIGHT.
 1 pair of Brackets 14 1/2 lbs
 4 Bolts & Nuts 5 1/2 "
 3 5" Spikes 3 "

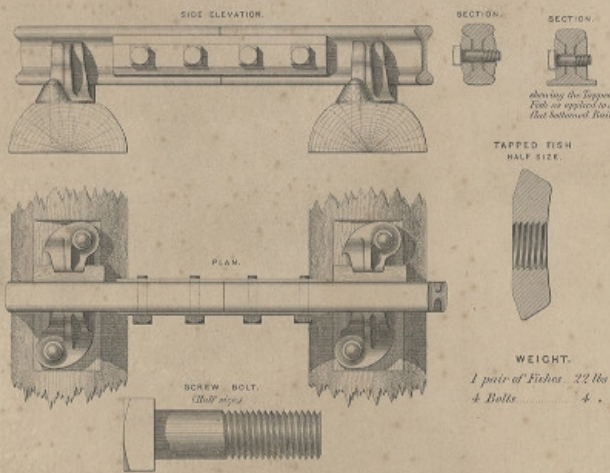
NO 58742
 GREAT BRITAIN
 ENGINEER'S OFFICE, PROPERT

ROBERT MOATE'S ROLLED JOINT & INTERMEDIATE CHAIRS.



WEIGHT.
 1 pair of Joint Chairs 40 lbs
 1 pair of Intermediate Chairs 44 "
 1 Bolt & Nut 1 "
 2 Spikes 1 "

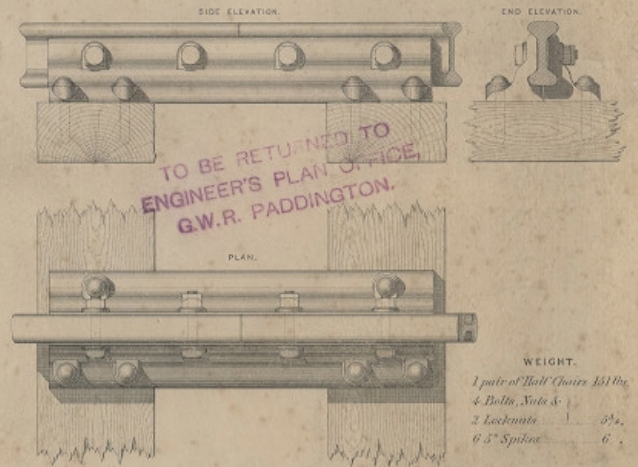
W. POLE'S TAPPED FISH JOINT.



WEIGHT.
 1 pair of Fishes 22 lbs
 4 Bolts 4 "

WEIGHT.
 22 lbs
 4 1/2 "

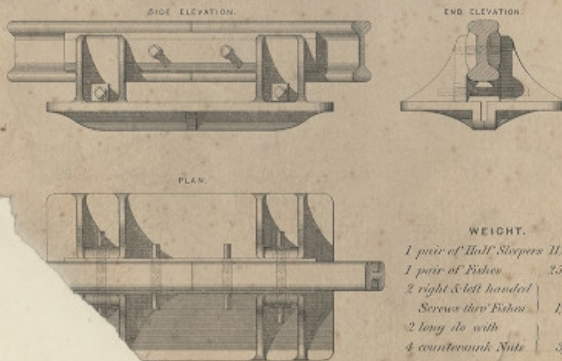
W. BARNINGHAM'S JOINT CHAIR IN TWO PARTS.



TO BE RETURNED TO
 ENGINEER'S PLAN OFFICE,
 G.W.R. PADDINGTON.

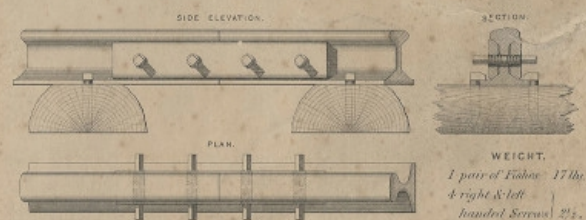
WEIGHT.
 1 pair of Joint Chairs 151 lbs
 4 Bolts, Nuts & Lockwashers 5 1/2 "
 6 5" Spikes 6 "

ROBT RICHARDSON & J.E. BILLUP'S RIGHT & LEFT HANDED SCREWS, AS APPLIED TO FISH JOINTED CAST IRON SLEEPER.



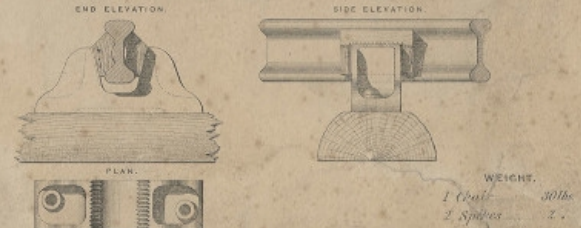
WEIGHT.
 1 pair of Half Sleepers 112 lbs
 1 pair of Fishes 25 1/2 "
 2 right & left handed Screws thro Fishes 1 1/2 "
 2 long do with 4 counterwash Nuts 3 1/2 "

J. E. BILLUP'S FISH JOINT WITH RIGHT & LEFT HANDED SCREWS.



WEIGHT.
 1 pair of Fishes 17 lbs
 4 right & left handed Screws 2 1/2 "

PETER ASHCROFT'S CHAIR.



WEIGHT.
 1 Chair 30 lbs
 2 Spikes 2 "

MAY & R. PRINCE'S FASTENINGS.



FOR FURTHER INFORMATION APPLY TO W. HOWDEN, ESQ. SECRETARY, AT THE OFFICES AS ABOVE.

Rec'd from Mr. Richardson
 18th November 1874